



MIDLANDS
LONDON
SOUTH EAST

ARCHITECT
DESIGN
SERVICES
(ADS1.1)

LONDON REGION ONLY



FRAMEWORK GUIDE
7TH OCTOBER 2021 - 30TH JUNE 2025

Improving lives and places
through quality procurement solutions

[LSE.LHCPROCURE.ORG.UK](https://lse.lhcprocure.org.uk)

WHY HAS THIS FRAMEWORK BEEN DEVELOPED?

This LHC framework, which is available across London, has been delivered in partnership with Southwark Council.

By combining our procurement and design expertise, LHC and Southwark Council aimed to remove the procurement-related barriers often faced by the architectural community, in an effort to attract a more diverse range of practices.

Historically, these barriers can lead to challenges, such as the same companies being awarded work, a bespoke approach not being taken to urban-dense environments and an overall lack of innovative design. In turn, these challenges can prevent the public sector from being able to appoint the best quality design teams.

The ADS1.1 Framework gives additional focus to equality, diversity and inclusion (EDI) and social value-related criteria.

It was designed following extensive engagement sessions with a diverse range of practices and the wider architectural community. Their feedback shaped the ADS1.1 process so that we could create something that reflected the market and was widely accessible to the talent we wanted to attract.

The approach we adopted made sure there was no positive discrimination and that all successful candidates were selected on merit and via a fair and open process.

We have appointed a range of diverse and highly talented practices to the framework, many of whom are minority-led practices. Hailing from Southwark, Hackney, Lambeth, Islington, Camden and Tower Hamlets, they have lived experience of London's under-privileged communities, and entirely new skills and fresh approaches to urban regeneration and community engagement.

Work to further build upon what has been achieved by ADS1.1 is on-going for LHC and Southwark Council, which includes implementing a national template of good practice for the entire construction industry.

Key benefits - at a glance:

- ✓ Architectural design-focused framework
- ✓ Shaped by architectural companies
- ✓ Access to more diverse architects
- ✓ Better community engagement and design results

“ This framework has been developed to remove the procurement-related barriers often faced by the architectural community. ”

ABOUT LHC AND FRAMEWORKS

LHC provides OJEU-compliant frameworks that can be used by local authorities, social landlords and other public sector bodies to procure works, products and services for the construction, refurbishment and maintenance of social housing, schools and public buildings.

We're recognised as being one of the most experienced and respected providers of construction sector procurement frameworks.

Established in 1966, LHC are acknowledged as one of the most experienced and respected providers of procurement frameworks in the construction sector.

More than 200 publicly-funded organisations

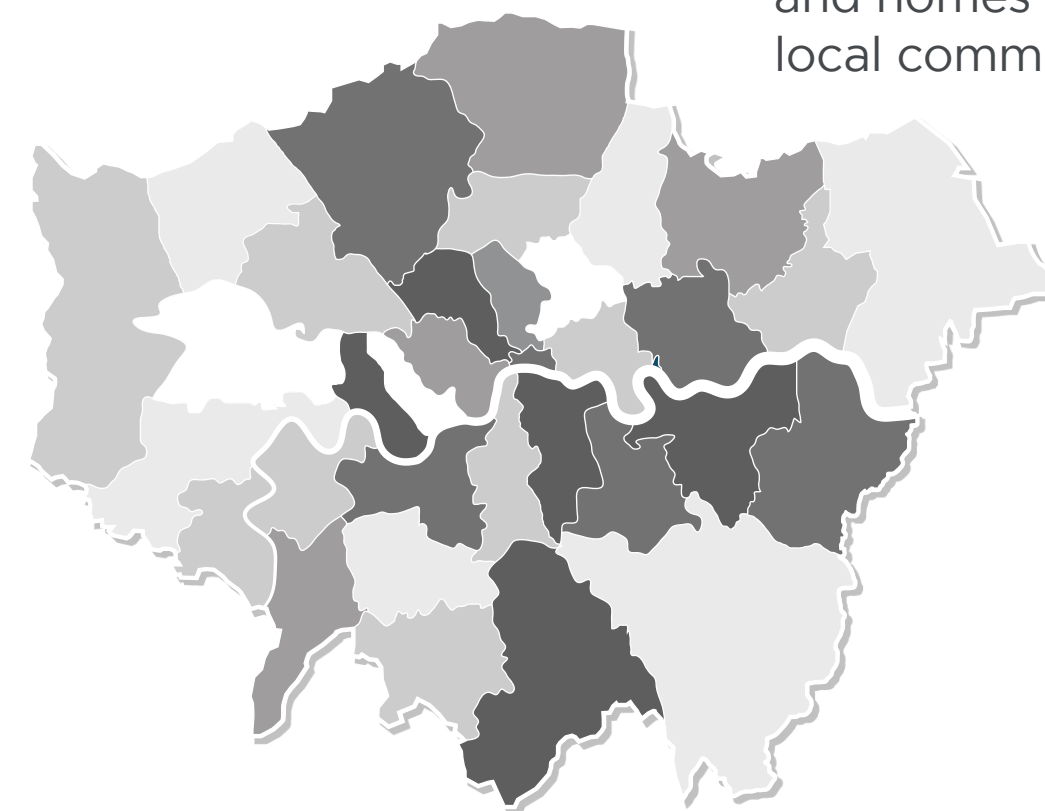
For further details on the authorities currently using our frameworks, visit: lse.lhcprocure.org.uk/who-we-work-with/

across England use our frameworks to procure works, goods and services to construct, refurbish and maintain social housing, schools and public buildings.

They include:

- > Local authorities and any subsidiaries and joint-venture vehicles of those local authorities.
- > Registered Social Landlords (RSL), Tenant Management Organisations (TMOs) & Arm's Length Management Organisations (ALMOs)
- > Health Authorities, Councils, Boards and Trusts
- > Publicly funded schools
- > Universities, colleges and further education establishments
- > Police forces, fire and rescue services
- > Registered charities

“ Our purpose is to deliver better buildings and homes that enhance local communities. ”



TENDER AND EVALUATION PROCESS

The process involved a two-stage Restricted Tender that started with an initial Selection Questionnaire phase. Shortlisted tenderers were then invited to submit an Invitation To Tender (ITT) response.

STAGE 1: Selection Questionnaires and Evaluation

What was involved

Applicants applied for a maximum of three Lots and one value band.

- For:**
 - **Value band 1 (£0 to £5m)** - no turnover required
 - **Value band 2 (£5m to £20m)** - a minimum turnover of £500,000 was required
 - **Value band 3 (£10m+)** - a minimum turnover of £1 million was required
 - **Lot 7** - a maximum turnover of £2 million was required

Applicants were required to:

- **Answer mandatory selection questions** - that covered details, including grounds for exclusion of applicants based on criminal convictions and the non-payment of taxes, insolvency, professional misconduct, non-payment of social security contributions and validation that applicants paid London Living Wage.
- **Have at least £2million Public Liability, Employees Liability and Professional Indemnity insurance cover.**
- **Pass the financial due diligence assessment, including a credit check and 2 years of accounts.**
- **Demonstrate they were appropriately resourced** - this included being ARB registered and committed to working towards BIM Level 2.

- ### What we were looking for
- Written and visual submissions from within the last 7 years that evidenced their work as follows:
- 1 unbuilt case study for Lot 1
 - 1 built case study for Lots 2 to 6
 - 2 case studies for Lot 7 (1 built and 1 unbuilt project)

In order to progress to the next stage, ITT, applicants had to score 60%. (Details about the second phase can be found on the opposite page).

STAGE 2: Invitation To Tender (ITT) Documentation

What was involved

This stage of the process involved two main elements for Lots 1 to 6. Tenderers had to:

1. **Respond** to technical and quality questions.
2. **Complete** a pricing schedule.

They were also required to provide written and visual submissions that explained their approach to design, communication and engagement methodology. Details of how they achieve value management from the outset and how their experience can be applied to the 8 Southwark Fairer Future Commitments were also required.

At this stage, we were looking for companies to evidence their technical ability to provide the work they were tendering for.

Overall, we were looking for:



EDI was a significant focus area

One of the unique features of this framework was the extended interview for some of the candidates. It was particularly effective in giving the smaller, emerging and diverse practices a platform to showcase their expertise.

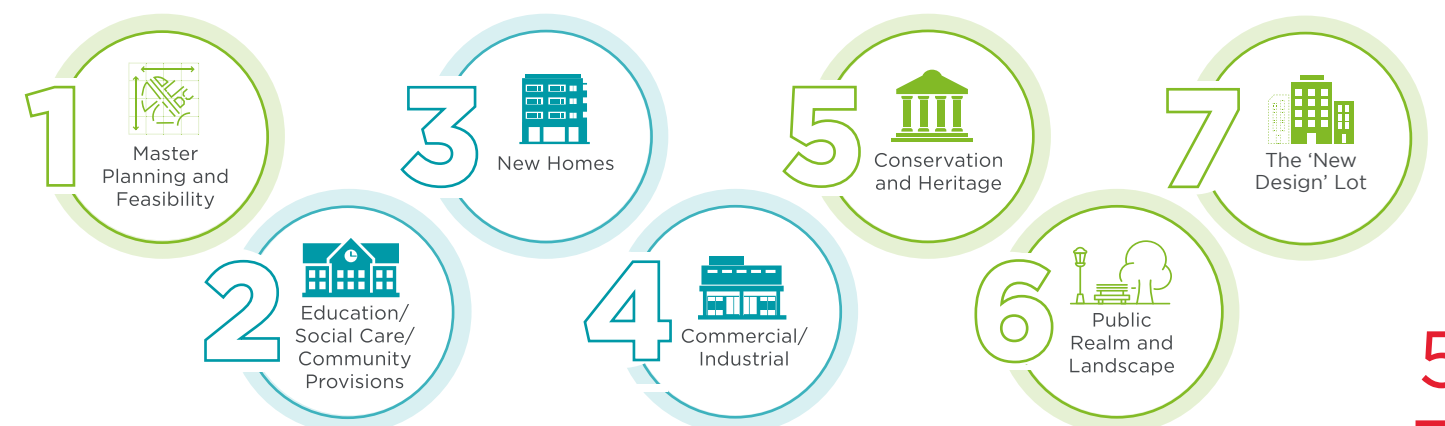
For Lot 7, the candidates were also required to participate in a case study interview.

ADS1.1 Framework Lots - explained

Lots 1 to 6 are designed to: Appoint practices who are experienced in delivering projects for the relevant category.

Lot 7 is designed to: Remove the barriers some smaller or emerging practices frequently face when trying to secure public sector work. We refer to this as the 'New Design' Lot (for more details, turn to page 14).

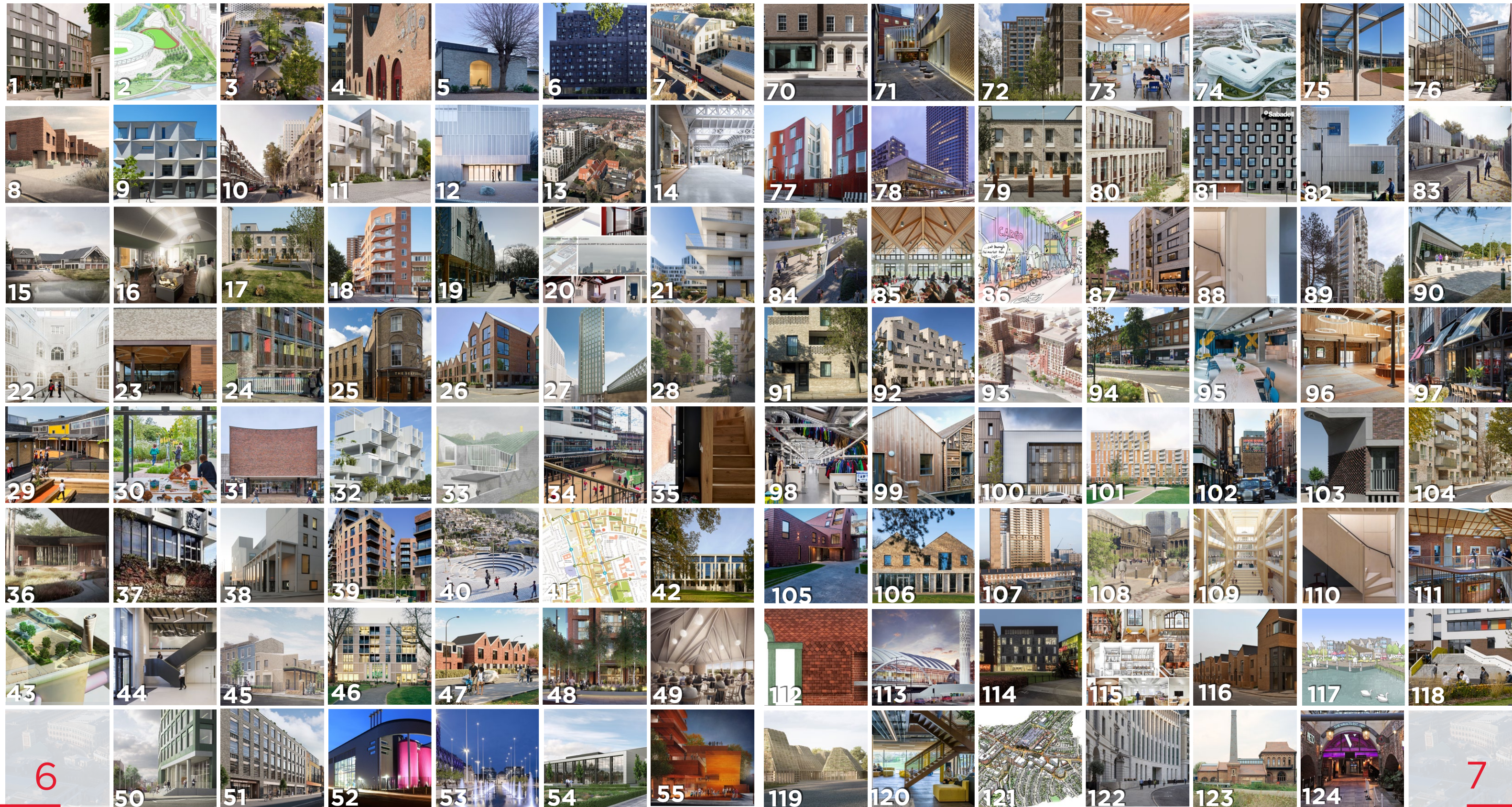
- ### How the Lots link with the value bands:
- Lots 1, 5, 6 & 7 cover all values.
 - Lots 2, 3 & 4 span value band 1 (£0 to 5m), value band 2 (£5m to £20m) and value band 3 (£10m+).



APPOINTED COMPANIES - AN OVERVIEW

Over the next few pages, we've listed the architectural practices that have been appointed to the ADS1.1 Framework after successfully completing the two-stage application and tendering process.

These Appointed Companies will play an instrumental role in bringing the framework to life and transforming public sector design throughout London for many years to come. In the meantime, here's a glimpse of some of their key projects:



THE APPOINTED COMPANIES - LOTS 1 AND 2



LOT 1

Master Planning
and Feasibility

Lot focus: Preparation and production of strategic or project-specific masterplans and feasibility studies.

Applicable value bands: **All**

Appointed Companies:

1. Stitch Studio
2. Maccreanor Lavington
3. Weston Williamson + Partners
4. Farrells
5. Allies and Morrison
6. Studio Egret West
7. 5th Studio
8. Patel Taylor
9. dRMM
10. Panter Hudspith Architects
11. Cullinan Studio
12. Proctor and Matthews Architects
13. insider-outsider + Native Studio
14. Urban Symbiotics



LOT 2

Education/Social Care/
Community Provisions

Lot focus: Full architect services for new, remodelled and refurbishment projects within the education, social care and non-housing community buildings sectors.

Applicable value bands: **1, 2 & 3**

Value Band 1 (£0 - £5M)

Appointed Companies:

- | | |
|----------------------------------|-------------------------------------|
| 1. CDC Studio | 6. Gatti Routh Rhodes Architects |
| 2. Inter Urban Studios | 7. Fraser Brown Mackenna Architects |
| 3. Innes Associates | 8. Landolt and Brown Architects |
| 4. Black Architecture | 9. Freehaus |
| 5. Sarah Wigglesworth Architects | 10. Knox Bhavan Architects |

Value Band 2 (£5M - £20M)

Appointed Companies:

- | | |
|--|-----------------------------|
| 1. Levitt Bernstein | 8. Turner Works |
| 2. Marks Barfield Architects | 9. Morris+Company |
| 3. van Heyningen and Haward Architects | 10. Twelve Architects |
| 4. Haverstock | 11. HLM Architects |
| 5. Alison Brooks Architects | 12. David Morley Architects |
| 6. Cottrell & Vermeulen Architecture | 13. Serie Architects |
| 7. Cullinan Studio | |

Value Band 3 (£10M+)

Appointed Companies:

- | | |
|----------------------------------|------------------------------|
| 1. Penoyre & Prasad | 7. Hawkins\Brown |
| 2. Allford Hall Monaghan Morris | 8. Architecture Initiative |
| 3. Scott Brownrigg | 9. Jestico + Whiles |
| 4. Feilden Clegg Bradley Studios | 10. Jamie Fobert Architects |
| 5. Tim Ronalds Architects | 11. Mangera Yvars Architects |
| 6. Nicholas Hare Architects | |

THE APPOINTED COMPANIES - LOTS 3 AND 4



LOT 3

New Homes

Lot focus: Full architect services for new low, medium or high-rise housing projects.

Applicable value bands: **1, 2 & 3**

Value Band 1 (£0 - £5M)

Appointed Companies:

- | | |
|-------------------------|----------------------------|
| 1. Metaphorm Architects | 6. Architecture Initiative |
| 2. Archio | 7. daab Design Architects |
| 3. Mowat and Company | 8. Mole Architects |
| 4. Cottrell & Vermeulen | 9. Freehaus |
| 5. Stolon Studio | 10. Unionne |

Value Band 2 (£5M - £20M)

Appointed Companies:

- | | |
|-------------------------------|------------------------------|
| 1. Penoyre & Prasad | 6. Adam Khan Architects |
| 2. Haptic Architects | 7. Alison Brooks Architects |
| 3. Coffey Architects | 8. Peter Barber Architects |
| 4. Child Graddon Lewis | 9. Stephen Taylor Architects |
| 5. Brisac Gonzalez Architects | 10. Serie Architects |

Value Band 3 (£10M+)

Appointed Companies:

- | | |
|----------------------------------|---------------------------|
| 1. Levitt Bernstein | 8. Morris+Company |
| 2. Geraghty Taylor | 9. dRMM Ltd |
| 3. Bell Phillips Architects | 10. Conran and Partners |
| 4. Maccreeanor Lavington | 11. de Metz Forbes Knight |
| 5. Allies and Morrison | 12. Haworth Tompkins |
| 6. Cullinan Studio | 13. Adjaye Associates |
| 7. Karakusevic Carson Architects | |



LOT 4

Commercial/
Industrial

Lot focus: Full architect services for new, remodelled and refurbishment projects within the commercial and industrial buildings sectors.

Applicable value bands: **1, 2 & 3**

Value Band 1 (£0 - £5M)

Appointed Companies:

- | | |
|---------------------|--------------------------------------|
| 1. Rock Townsend | 6. Boon-Brown |
| 2. Al-Jawad Pike | 7. Projects Office |
| 3. WAM design | 8. Wren Architecture & Design |
| 4. Innes Associates | 9. Robinson Kenning & Gallagher |
| 5. Moll Architects | 10. insider-outsider + Native Studio |

Value Band 2 (£5M - £20M)

Appointed Companies:

- | | |
|------------------------|--------------------|
| 1. Coffey Architects | 7. Architecture 00 |
| 2. ColladoCollins | 8. MCM |
| 3. Gradon Architecture | 9. Hale |
| 4. GPAD | 10. Unionne |
| 5. Turner Works | 11. Pattern Design |
| 6. Gort Scott | |

Value Band 3 (£10M+)

Appointed Companies:

- | | |
|----------------------------------|-----------------------|
| 1. Marks Barfield Architects | 7. Wilkinson Eyre |
| 2. Nicholas Hare Architects | 8. Morris+Company |
| 3. de Metz Forbes Knight | 9. TateHindle |
| 4. Karakusevic Carson Architects | 10. Jestico + Whiles |
| 5. Panter Hudspith Architects | 11. Adjaye Associates |
| 6. ACME | |

THE APPOINTED COMPANIES - LOTS 5 AND 6

LOT 5

Conservation
and Heritage

Lot focus: Preparation and production of strategic or project-specific masterplans and feasibility studies.

Applicable value bands: **All**

Appointed Companies:

1. Purcell
2. MICA Architects
3. SODA Studio
4. dRMM
5. Avanti Architects
6. Cartwright Pickard
7. Tim Ronalds Architects
8. LTS Architects
9. Studio Egret West
10. de Metz Forbes Knight
11. Chris Dyson Architects
12. Witherford Watson Mann
13. Adam Richards Architects
14. Curl La Tourelle Head
15. Asif Khan

LOT 6

Public Realm
and Landscape

Lot focus: Full architect or landscape architect services for projects within the public realm.

Applicable value bands: **All**

Appointed Companies:

1. Fereday Pollard
2. Tonkin Liu
3. Graeme Massie Architects
4. Patel Taylor
5. BBUK Studio
6. Project Centre
7. EVA Studio
8. Neiheiser Argyros
9. LT Studio
10. Studio Weave
11. NOOMA studio

THE APPOINTED COMPANIES - LOT 7



LOT 7

The 'New Design' Lot

Lot focus: This Lot was created to specifically remove the barriers some smaller or emerging practices regularly face when trying to secure public sector work. More than 80% of Lot 7 Appointed Companies were not on any other public sector framework at the point of being appointed to ADS1.1.

The challenges

These practices are often overlooked due to the fact they're often competing against companies with substantial bid teams. They're also consistently required to demonstrate previous experience in use classes they are yet to explore. As a result, they become 'invisible' to public sector delivery teams.

Our solution

We implemented a £2million turnover cap and invited these smaller practices to evidence their expertise through one built and one unbuilt project. More importantly, we invited them to take part in face-to-face interviews with the evaluation panel, giving them the opportunity to demonstrate their innovation and design expertise in person.

This Lot can be used to procure works of any use class and is underpinned by appointed practices demonstrating the highest quality skillset and design principles. Direct award is possible, however, to ensure the brief is delivered to the best possible quality (and by the most relevant practice), the standard approach is a mini competition.

Appointed Companies:

- | | |
|----------------------------------|--|
| 1. David Leech Architects | 12. Hall McKnight |
| 2. Gatti Routh Rhodes Architects | 13. Gibson Thornley |
| 3. SODA Studio | 14. Walker Hay Architects |
| 4. Al-Jawad Pike | 15. Patalab |
| 5. Daykin Marshall Studio | 16. Denizen Works |
| 6. 31/44 Architects | 17. Mailen Design |
| 7. Assorted Skills + Talents | 18. Timothy Smith & Jonathan Taylor Architects |
| 8. Mikhail Riches | 19. Tonkin Liu |
| 9. TDO Architecture | 20. Stonewood Design |
| 10. CDC Studio | 21. insider-outsider + Native Studio |
| 11. DRDH Architects | 22. Gbolade Design Studios |

These 3 services are optional on all Lots



Employers Agent



Principal Designer



Contractor Administrator

AWARD OPTIONS

Clients use one of the following two options to award work:

Direct award There is no further competition. All terms and conditions of the call-off project are within the framework terms and conditions.

OR

Mini-competition, Terms and conditions of the call-off may vary or be modified from the framework or at the client's request.

When calling-off projects, clients can apply a standard building contract form, such as JCT/SBCC, NEC/NEC4, ACE, PPC, TPC or FAC1. Alternatively, they can use their own in-house agreement.

Accessing the framework

Companies appointed to LHC frameworks are required to pay a small percentage ('the levy') of the total value of every invoice submitted to clients and submit quotations to clients that are inclusive of the levy. As a not-for-profit organisation, LHC returns surplus levy income to our clients to support social value initiatives within the local communities they serve.

General terms and conditions

LHC uses the FAC1 standard form of contract to manage its frameworks. The LHC pro forma, which should be read alongside the FAC1 in published form, details the terms and conditions that govern the operation of the framework, including the procedures to call off projects.

A free copy of the LHC pro forma is available upon request. The FAC1 in standard published form can be purchased at a negotiated rate from ACA.

To obtain a copy, email office@acarchitects.co.uk and quote discount code reference - LHCFAC2516102017.



MAKING DIVERSITY ONE OF THE KEY BUILDING BLOCKS OF ARCHITECTURAL DESIGN

Adapting to the current environment, particularly post-Covid, is crucial for 21st century architects. While they continue to play a key role in helping address the current housing and climate crisis, they are also tasked with truly understanding and meeting the rapidly-evolving needs of local communities.

Fundamental foundation for the future

Historically, the architecture industry has faced another significant challenge – a lack of diversity. We believe building an inclusive and diverse range of practices that represents local culture is fundamental for the sector moving forward.

By creating this framework, we are providing clients with access to a broad range of architects with the skills and experience to deliver on a multitude of public procurement projects.

We have also been able to prove that a more diverse supply base that represents London's urban communities is achievable

All of our ADS1.1 Appointed Companies were subjected to a rigorous assessment and selection process that included structured, specific and relevant social value questions around EDI activities, customised scoring and award criteria, and face-to-face interviews.

The interview phase is one of the most unique aspects of this framework. It provided companies that wouldn't normally be eligible for public sector frameworks with a platform to showcase their expertise. Overall, we spent more than 80 hours interviewing applicants.

Delivering diversity on multiple levels

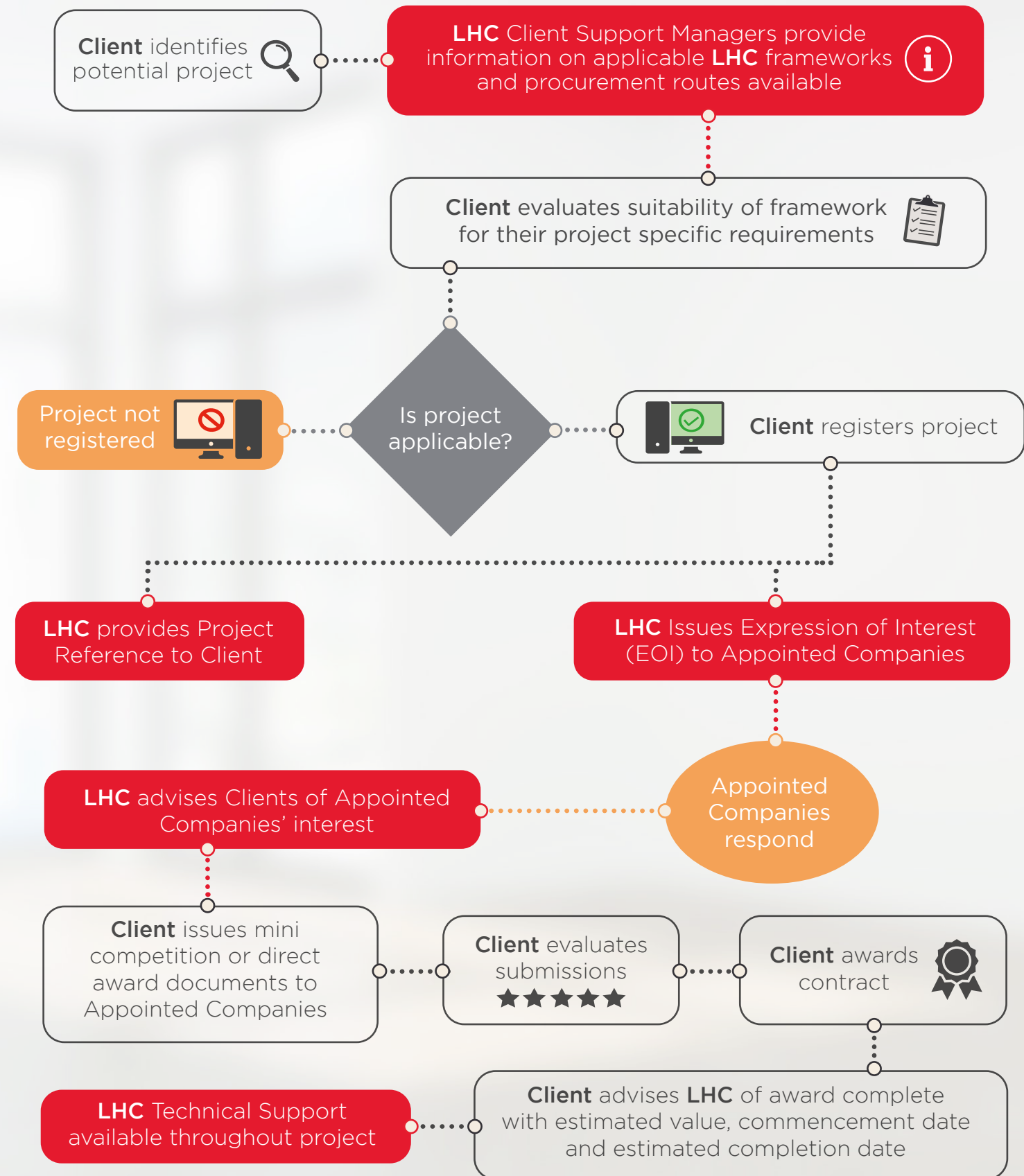
All of the ADS1.1 Appointed Companies delivered on social value in every aspect of their business - recruitment and retention, advocacy and outreach work, supporting minority networks, sponsoring disadvantaged students into the profession and through their lived experience and ability to connect with under-represented communities and translate their needs into design.

Ultimately, the framework is helping pave the way for greater EDI within public sector procurement by:

- **Providing** a list of architectural suppliers that represents the diversity of London's local communities and:
 - Is made up of local and diverse architectural talent with the expertise to deliver bespoke and innovative schemes
 - Plans to employ and upskill locally and work with local people
- **Helping** create better homes for London communities that help address local problems
- **Generating** improved job prospects and access to professions for historically under-represented and disadvantaged groups
- **Encouraging** more young people to get involved in designing the built environment around them, which also includes:
 - Improving the retention of ethnic minorities, especially black professionals, within architecture
 - Providing greater access to construction professions for ethnic minority young people

The ADS1.1 Framework Evaluation Panel

WHAT A TYPICAL FRAMEWORK PROCESS INVOLVES



INDEX OF ARCHITECTS

1. **31/44 Architects**, "Redchurch Townhouse" www.3144architects.com
2. **5th Studio**, "Bow Freight Campus Masterplan" www.5thstudio.co.uk
3. **ACME**, "Eastland Town Centre" www.acme.ac
4. **Adam Khan Architects**, "Central Somers Town, Camden (Photography by David Grandorge)" www.adamkhan.co.uk
5. **Adam Richards Architects**, "Walmer Castle and Gardens Learning Centre and Café" www.adamrichards.co.uk
6. **Adjaye Associates**, "Sugar Hill Mixed-Use Development in Harlem, New York, USA" www.adjaye.com
7. **Alison Brooks Architects**, "Cohen Quad" www.alisonbrooksarchitects.com
8. **Al-Jawad Pike**, "Daubeney Road" www.aljawadpike.com
9. **Allford Hall Monaghan Morris**, "Burntwood school" www.ahmm.co.uk
10. **Allies and Morrison**, "Oswin Street, Elephant and Castle" www.alliesandmorrison.com
11. **Archio**, "London Community Land Trust Housing, Lewisham" www.archio.co.uk
12. **Architecture 00**, "MANOR Works" www.architecture00.net
13. **Architecture Initiative**, "Woodlands Quarter, Ealing" www.architectureinitiative.com
14. **Asif Khan**, "Central Square Galleries, Museum of London, West Smithfield" www.asif-khan.com
15. **Assorted Skills +Talents**, "Quintin Hogg Trust/University of Westminster Boat Club" www.assortedskillstalents.com
16. **Avanti Architects**, "Walworth Town Hall, Southwark" www.avantiarchitects.co.uk
17. **BBUK Studio**, "Goldsmith Street" www.bbukstudio.com
18. **Bell Phillips Architects**, "Marklake Court, Southwark (Photographer: Kilian O'Sullivan.)" www.bellphillips.com
19. **Black Architecture**, "The Green Man" www.black-architecture.com
20. **Boon-Brown**, "100 Brewery Road" www.boonbrown.com
21. **Brisac Gonzalez Architects** "Q4A, Clichy-Batignolles" www.brisacgonzalez.com
22. **Cartwright Pickard**, "Lambeth Town Hall" www.cartwrightpickard.com
23. **CDC Studio**, "The Stephen Perse Foundation NEW SPORTS + LEARNING BUILDING" www.chadwickdryerclarke.co.uk
24. **Child Graddon Lewis**, "Lewis Victoria Wharf" www.cguk.com
25. **Chris Dyson Architects**, "Sekforde" www.chrisdyson.co.uk
26. **Coffey Architects Limited** "Moor's Nook, Surrey" www.coffeyarchitects.com
27. **ColladoCollins Architects**, "Rockingham Road" www.colladocollins.com
28. **Conran and Partners**, "St James Square" www.conranandpartners.com
29. **Cottrell & Vermeulen**, "Bellenden Primary School" www.cv-arch.co.uk
30. **Cullinan Studio**, "Hyde Hall Hilltop Community and Education Complex for the Royal Horticultural Society" www.cullinanstudio.com
31. **Curl La Tourelle Head**, "Grade II Listed Hornsey Library" www.clth.co.uk
32. **daab Design Architects**, "Micro House/Macro Community" www.daabdesign.co.uk
33. **David Leech Architects**, "An alley and courtyard housing" www.david-leech.co.uk
34. **David Morley Architects**, "King's Cross Academy and Frank Barnes School for Deaf Children at The Plimsoll Building" www.davidmorleyarchitects.co.uk
35. **Daykin Marshall Studio**, "Family Commune Image credit: Nick Guttridge" www.daykinmarshall.com
36. **Denizen Works**, "The Glade" www.denizenworks.com
37. **dMFK**, "1. Goldney Road 2. York House 3. Salter's Hall" www.dmfk.co.uk
38. **DRDH Architects**, "Stormen Concert hall and Library, Bodø, Norway" www.drhdharchitects.co.uk
39. **dRMM**, "Trafalgar Place" www.drmm.co.uk
40. **EVA Studio**, "Tapis Rouge, Haiti" www.evastudio.co.uk
41. **Farrells**, "Sutton Town Centre masterplan" www.farrells.com
42. **Feilden Clegg Bradley Studios**, "University of Roehampton Library" www.fcbstudios.com
43. **Fereday Pollard**, "Carnwath Road" www.feredaypollard.com
44. **Fraser Brown Mackenna Architects**, "Community centre, Hackney" www.fbarchitects.com
45. **Freehaus**, "The Clement James Centre" www.freehausdesign.com
46. **Gatti Routh Rhodes Architects**, "Bethnal Green Mission Church" www.grr-architects.com
47. **Gbolade Design Studios**, "Hermitage Mews, London" www.gboladedesignstudio.com
48. **Geraghty Taylor**, "81 Commercial Way, Woking" www.geraghtytaylor.com
49. **Gibson Thornley**, "Sessay Community Centre" www.gibsonthornley.com
50. **Gort Scott**, "Harrow New Civic Centre" www.gortscott.com
51. **GPAD**, "White Lion Street Project" www.gpadlondonltd.com
52. **Gradon Architecture**, "Gateshead Energy Centre" www.gradonarchitecture.com
53. **Graeme Massie Architects**, "Centenary Square, Birmingham" www.graememassie.com
54. **Hale**, "Stihl, Camberley" www.hale-adm.com
55. **Hall McKnight**, "Gallaudet University, Washington DC" www.hallmcknight.com
56. **Haptic Architects**, "Rosemoor Studios." www.hapticarchitects.com
57. **Haverstock**, "The Belham Primary School" www.haverstock.com
58. **Hawkins\Brown**, "Ivydale Primary School" www.hawkinsbrown.com

59. **Haworth Tompkins**, "Meeting House Lane" www.haworthtompkins.com
60. **HLM Architects**, "Greenmead and Ronald Ross Primary School" www.hlmarchitects.com
61. **insider-outsider + Native Studio**, "Okun Makoko Development and Marx Circus" www.insider-outsider.com
62. **Innes Associates**, "Becket Keys" www.innesassociates.net
63. **Inter Urban Studios** "Little Lamps Nursery" www.interurbanstudios.com
64. **Jamie Fobert Architects** "Kettle's Yard, Gallery and Learning Centre." www.jamiefobertarchitects.com
65. **Jestico + Whites** "Shared Facilities Hub" www.jesticowhites.com
66. **Karakusevic Carson Architects** "Kings Crescent Estate" www.karakusevic-carson.com
67. **Knox Bhavan Architects** "Cassiobury Park, Watford" www.knoxbhavan.co.uk
68. **Landolt and Brown Architects** "Peckham Rye Station Square" www.landoltbrownportfolio.wordpress.com
69. **Levitt Bernstein** "Aylesbury Estate" www.levittbernstein.co.uk
70. **LTS Architects** "Science Gallery London" www.lts-architects.co.uk
71. **LT Studio**, "Borough High Street" www.ltstudio.co.uk
72. **Maccreeor Lavington** "Romford Town Centre (Photographer: Tim Crocker)" www.maccreeorlavington.com
73. **Mailen Design**, "Meadows Nursery" www.mailendesign.com
74. **Mangera Yvars Architects**, "atar Faculty of Islamic Studies" www.myaa.eu
75. **Marks Barfield Architects** "Cambridge Primary School" www.marksbarfield.com
76. **MCM** "17 Charterhouse Street - Anglo American/ DeBeers" www.mcm-uk.com
77. **Metaphorm Architects**, "Brandon Street" www.metaphorm.com
78. **MICA Architects**, "Centre Point" www.micaarchitects.com
79. **Mikhail Riches**, "Goldsmith Street, Norwich (photographer, Tim Crocker)" www.mikhailriches.com
80. **Mole Architects**, "Eddington, Cambridge" www.molearchitects.co.uk
81. **Moll Architects**, "Banc Sabadell Headquarters" www.mollarchitects.com
82. **Morris+Company** "1. Belle View 2. Energy Hub 3. R7, Kings Cross" www.morrisandcompany.com
83. **Mowat and Company** "Morpeth Road Housing for Peabody" www.mowatandco.com
84. **Neiheiser Argyros** "The Tide Linear Park" www.neiheiserargyros.com
85. **Nicholas Hare Architects** "King's High School, Warwick" www.nicholashare.co.uk
86. **NOOMA Studio** "A Vision for Local High Streets - Atlantic Road" www.nooma.studio
87. **Panter Hudspith Architects** "1. Woolwich Exchange 2. Orchard Gardens" www.panterhudspith.com
88. **Patalab**, "The Gables" www.patalab.com
89. **Patel Taylor**, "1. London Dock 2. Thames Barrier Park" www.pateltaylor.co.uk
90. **Pattern Design**, "The Battle of Britain Visitor Centre" www.bdp-pattern.com
91. **Penoyre & Prasad** "The Bobby Moore Secondary Academy (Photographer: @DennisGilbert)" www.penoyreprasad.com
92. **Peter Barber Architects** "Peckham Road Mansions" www.peterbarberarchitects.com
93. **Proctor and Matthews Architects**, "South Thamesmead" www.proctorandmatthews.com
94. **Project Centre** "Eastcote Town Centre" www.projectcentre.co.uk
95. **Projects Office** "accuRx Office" www.projectsoffice.co
96. **Purcell**, "Kresen Kernow" www.purcelluk.com
97. **Robinson Kenning & Gallagher**, "Old Union Yard, 229 Union Street, Southwark" www.rkgpartnership.co.uk
98. **Rock Townsend** "Berghaus HQ, Sunderland" www.rocktownsend.co.uk
99. **Sarah Wigglesworth Architects** "Mellor School, Forest School Extension by SWA, 2016. Credit Becky Lane." www.swarch.co.uk
100. **Scott Brownrigg** "Harris Invictus Academy, Croydon" www.scottbrownrigg.com
101. **Serie Architects** "Carrick House, Royal Wharf, London" www.serie.co.uk
102. **SODA Studio** "Walker's Court & Boulevard Theatre (Photographer: Jack Hobhouse.)" www.sodastudio.co.uk
103. **Stephen Taylor Architects**, "Cadix, Antwerp, Belgium" www.stephentaylorarchitects.co.uk
104. **Stitch Studio** "Acton Gardens Phase 7.1" www.stitch-studio.co.uk
105. **Stolon Studio**, "Kaolin Court, Lewisham" www.stolon.co.uk
106. **Stonewood Design**, "Kingswood Pre-prep School and Nursery" www.stonewooddesign.co.uk
107. **Studio Egret West**, "1. East Wick and Sweetwater 2. Balfron Tower" www.studioegretwest.com
108. **Studio Weave**, "Bank Junction Improvement" www.studioweave.com
109. **TateHindle**, "The Salvation Army, New Territorial Headquarters" www.tatehindle.co.uk
110. **TDO Architecture**, "Fab House (Photographer: Peter Cook.)" www.tdoarchitecture.com
111. **Tim Ronalds Architects**, "Alley's School Lower School" www.timronalds.co.uk
112. **Timothy Smith & Jonathan Taylor Architects**, "Cliveden Gardens" www.smithandtaylorllp.com
113. **Tonkin Liu**, "1. Kingston Ancient Market 2. Manchester Tower of Light" www.tonkinliu.co.uk
114. **Turner Works**, "Mountvire Academy" www.turner.works
115. **Twelve Architects**, "The Passmore Centre, Southwark" www.twelvearchitects.com
116. **Unionne**, "Herbert Road" www.unionne.co
117. **Urban Symbiotics**, "Walton Manor Masterplan" www.urbansymbiotics.com
118. **van Heyningen and Haward Architects** "Bow School" www.vhh.co.uk/our-work/bow-school
119. **Walker Hay Architects** "Sevenoaks Nature and Wildlife Reserve" www.walkerhay.com
120. **WAM design**, "The Reef at Holiday Extras, Hythe, UK" www.wam.design
121. **Weston Williamson + Partners** "Future Wimbledon Masterplan" www.westonwilliamson.com
122. **Wilkinson Eyre** "8 Finsbury Circus" www.wilkinsoneyre.com
123. **Wetherford Watson Mann** "Walthamstow Wetlands" www.wwmarchitects.co.uk
124. **Wren Architecture & Design** "Market Place Bolton" www.wrenarchitecture.com



We hope you have found this guide useful. If you have any queries or if you require more information about this framework, get in touch via the contact details below.

In the meantime, for the latest ADS1.1 Framework and LHC updates, follow us on social media.

LHC

📍 4th Floor | 2 Vine Street | Uxbridge | UB8 1QE

☎ 01895 274 800

🌐 lse.lhcprocure.org.uk

✉ info@lseprocure.org.uk

✂ [@lhcprocurement](https://twitter.com/lhcprocurement)

[in. linkedin.com/company/lhc](https://www.linkedin.com/company/lhc)
