

Consultancy Services

Consultancy Services (CS1) (London Region)

26TH APRIL 2023 - 25TH APRIL 2027

Multi-Disciplinary Consultancy Services (MDC1)

11TH JANUARY 2022 - 10TH JANUARY 2028

Architect Design Services (ADS1.1)

7TH OCTOBER 2021 - 6TH OCTOBER 2024



LHC procures frameworks and DPS's, in accordance with The Public Contracts Regulations 2015, which can be used by local authorities, social landlords and other public sector bodies to procure works, products and services for consultancy, compliance, refurbishment and modernisation, energy efficiency and development projects.

Established in 1966, LHC are acknowledged as one of the most experienced and respected providers of procurement frameworks in the construction sector.

LHC
4th Floor | 2 Vine Street | Uxbridge | UB8 1QE

☎ 01895 274 800
✉ info@lseprocure.org.uk

🐦 @lhccprocurement
🌐 [linkedin.com/company/lhc](https://www.linkedin.com/company/lhc)

WHAT WILL YOU FIND IN THIS COMBINED FRAMEWORK GUIDE?

This combined framework guide will provide an end-to-end overview of LHC's entire construction-led consultancy frameworks portfolio. Each framework has been developed to provide an efficient, value for money procurement route for local authorities; registered social landlords; councils, boards, and trusts, and other public sector bodies seeking a comprehensive range of high-quality consultancy services across multiple disciplines.

Services available include:

- Architectural design
- Mechanical, electrical, and plumbing (MEP)
- Asset management consultancy
- Multi-disciplinary consultancy

Each distinct framework brings together trusted suppliers recognised for their specialist expertise and designed to ensure our clients have access to services enabling them to meet the rapidly evolving needs of local communities.

LHC's construction consultancy framework portfolio includes:



Consultancy Services (CS1)

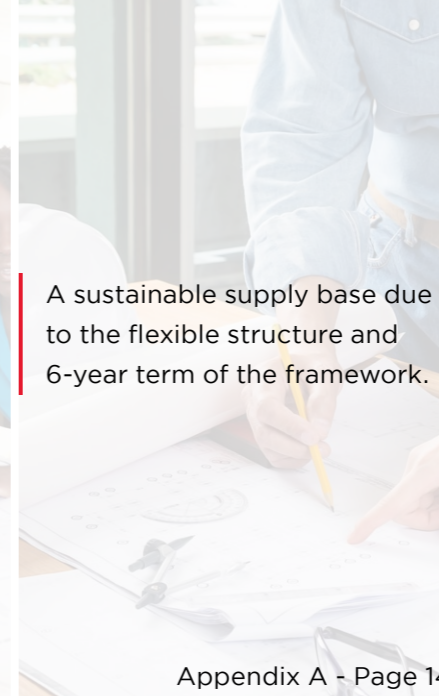


Designed to increase public sector access to specialist expertise and support regional and local economic growth.

Page 4



Multi-Disciplinary Consultancy Services (MDC1)

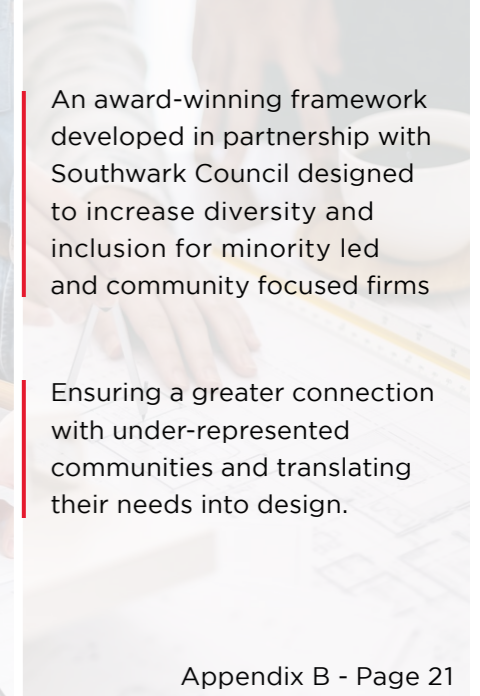


A sustainable supply base due to the flexible structure and 6-year term of the framework.

Appendix A - Page 14



Architectural Design Services (ADS1.1)



An award-winning framework developed in partnership with Southwark Council designed to increase diversity and inclusion for minority led and community focused firms

Ensuring a greater connection with under-represented communities and translating their needs into design.

Appendix B - Page 21

WHY HAS THIS FRAMEWORK BEEN DEVELOPED?

CN 2022/S 000-022121, CAN 2023/S 000-012065

This framework has been developed to provide an efficient, value for money procurement route for local authorities; registered social landlords; councils, trusts, and other public sector bodies seeking a comprehensive range of high-quality consultancy services across multiple disciplines.

Key benefits - at a glance:

- ✓ Higher service standards through access to innovative companies of varying sizes.
- ✓ Greater customer service by focussing on collaboration and social value.
- ✓ A diverse supply base that reflects the London communities we serve.
- ✓ Increase public sector access to SME expertise and support regional and local economic growth.

About this framework

This Consultancy Services Framework is the first framework of its kind to have been provided by LHC Procurement Group to the London region and is a direct result of LHC's continued focus on bringing meaningful innovation to procurement framework design to meet the challenges faced by local authorities, registered social landlords, councils, boards, trusts, and other public sector bodies.

By combining our procurement and design expertise, and our track record in creating award winning frameworks aimed at ensuring greater diversity and inclusion, social value, and equal opportunities have culminated in the creation of our latest consultancy framework CS1.



“ In addition to large and medium-sized consultancies, of the 117 appointed companies across 21 lots are comprised of 80% SMEs, and between 35% and 60% in each lot are micro and small companies. Providing the public sector access to a more diverse range of SME and micro firms to support regional and community growth initiatives. ”

Dean Fazackerley
Head of Technical Procurement

The tender was carried out in strict accordance with the EU Procurement Directive and UK public sector procurement rules. Places on the framework were awarded to 27 different suppliers in three workstreams. The companies appointed to the framework are registered, qualified organisations with a track record in supporting public sector.

The term of the framework is from **26th April 2023 to 25th April 2027**. However, individual call off projects can be completed beyond the four-year duration of the framework as long as a contract is in place prior to the framework expiry date.

ABOUT THIS FRAMEWORK

CONTINUED

Our vision for the framework

The CS1 framework has been created to help organisations build capacity, strength and provide a comprehensive range of high-quality consultancy services across multiple disciplines to the public sector.

Following client feedback on the restrictive nature of value bands, combined with the vision to remove barriers for SMEs, this framework has been designed to be open and accessible.

The transparency and ethos of the framework encourages micro-SMEs to collaborate or partner with larger companies to bid, which in turn encourages growth through the four-year lifetime of the framework, making it more sustainable in the long term.

Our Client Support Managers and Technical Support Managers will be on hand to provide guidance around how to short-list applicants if a smaller list of bidders is required.

Aimed at projects of all sizes to meet client need and truly reflect the current market, it will also help organisations to offer something more through the evaluation of bidders' focus on EDI and customer service.



LHC Lifetime Values

In addition to providing our clients with competitively tendered Framework Agreements for building works, goods, and services LHC is committed to delivering tangible social value and community benefits that meet local and regional needs. LHC work with our clients and appointed companies to ensure that wherever possible projects delivered using our Frameworks leave a social legacy.

LHC has aligned its activities to create the LHC Lifetime Values, which uses the four key value categories as identified in the value toolkit by the Construction Innovation Hub (CIH). CIH has been established by Government to progress innovation in the construction sector.

During the life of the Framework LHC will work with clients and appointed companies to promote, identify, implement, and monitor the impact of these value categories, which could be supported by social value and community benefit initiatives alongside the delivery of the works or service contracts in meeting local/regional needs.

APPOINTED COMPANIES

ACROSS THE SOUTH EAST OF ENGLAND



BIMBOX

BYA BUTLER & YOUNG ASSOCIATES

Clear
Safety & Compliance



deriskuk.com



Holmes Miller

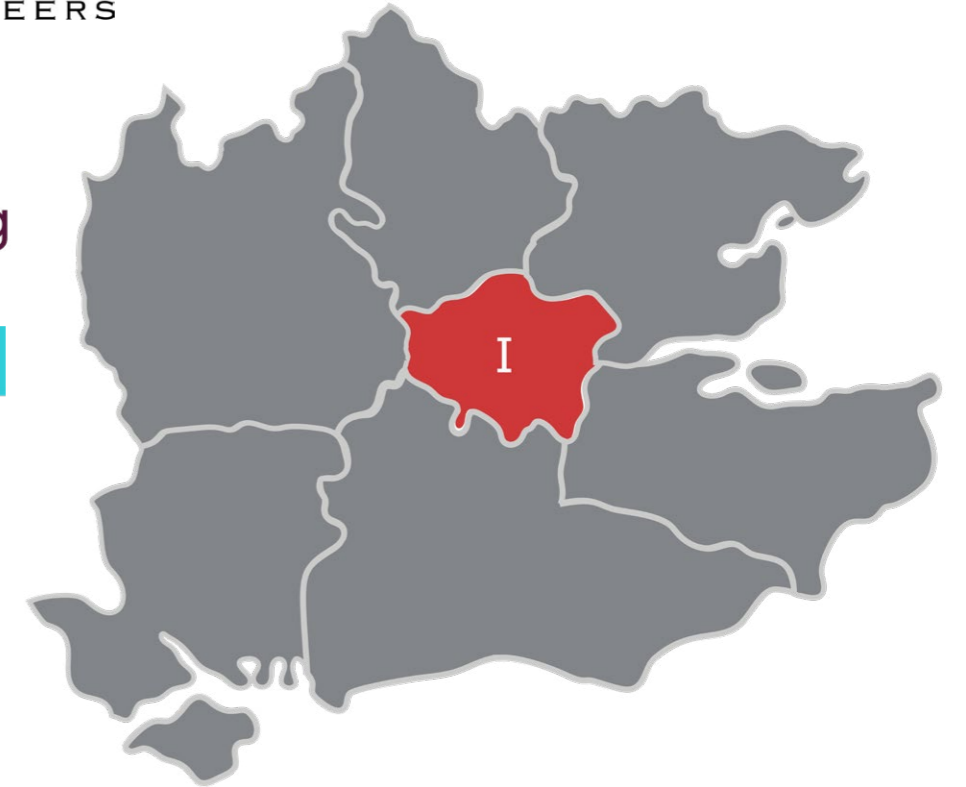


Karakusevic Carson Architects



APPOINTED COMPANIES

CONTINUED



WORKSTREAM OPTIONS

WORKSTREAM 2 - MECHANICAL, ELECTRICAL AND PLUMBING (MEP) CONSULTANCY

The services for each lot within this MEP workstream covers building services elements such as mechanical, electrical and plumbing systems (All Appointed Companies are listed alphabetically).

Mechanical, electrical and plumbing
London - I
Bailey Partnership (Consultants)
Butler & Young Services
Clear Safety Services
Couch Perry & Wilkes
David Miles & Partners
McCann & Partners
Method Consulting
Ridge and Partners
Wallace Whittle
Watts Group

Building services engineer (HVAC)
London - I
Bailey Partnership (Consultants)
Butler & Young Services
David Miles & Partners
McCann & Partners
Method Consulting
Ridge and Partners
Wallace Whittle
Watts Group



WORKSTREAM OPTIONS CONTINUED

WORKSTREAM 3 - ASSET MANAGEMENT CONSULTANCY

The services for each lot within this workstream are designed to provide clients with asset management services (All Appointed Companies are listed alphabetically).

EPC assessments
London - I
Energy & Compliance Technology
integrated Environmental Solutions
Pellings
R J Barwick
Rand Associates Consultancy Services
Retrofit consultancy (PAS2035/PAS2038)
London - I
ECD Architects
Karakusevic Carson Architects
LivGreen
Pellings
R J Barwick
Rand Associates Consultancy Services
Rider Levett Bucknall UK
Taylor Lewis
Digital co-ordinator
London - I
BIMBox Associates
ECD Architects
Holmes Miller
R J Barwick
Rider Levett Bucknall UK
Ridge and Partners
Ryder Architecture



WORKSTREAM 4 - HEALTH AND SAFETY CONSULTANCY

The service for the lot below within this workstream covers aspects of health and safety consultancy (All Appointed Companies are listed alphabetically).

Health and safety advisor/consultant
London - I
Atkins Réalis
Clear Safety Services
Derisk (UK)
Pellings
Pembrokeshire Safety Services
Rider Levett Bucknall UK
Thomson Gray



EVALUATION

CRITERIA

The process involved a single stage open tendering procedure as set out within the Public Contracts Regulations 2015.

The following qualification criteria were used to assess the suitability of appointed companies.

Financial Stability Assessment

Appointed Companies were assessed on a range of financial information including liquidity and profitability and checked via Creditsafe. The results of this check were assessed on a pass/fail basis.

Minimum Insurance Cover

Throughout the duration of the framework Appointed Companies are required to have the minimum levels of insurance to be considered as set out in the table below:

Insurance	Value
Employers (Compulsory) Liability Insurance	£5,000,000
Public Liability Insurance	£5,000,000
Professional Indemnity Insurance	£2,000,000

Accreditations and Certifications

In order to be considered eligible for this Framework, Appointed Companies were required to evidence that they held both the applicable qualifications and accreditations for each Lot/ Workstream they were applying for.

Workstream 2 – Mechanical, Electrical and Plumbing (MEP) Consultancy

Lot	M&E	M&E Qualifications (Mandatory)
2a	Mechanical, Electrical & Plumbing	Membership of a suitable and recognised professional body such as the Institute of Mechanical Engineers (IMechE), Electrical Contractors Association (ECA), Institute of Engineering and Technology (IET) or equivalent with experience is a requirement of this lot.
2b	Building Services Engineer (HVAC)	Membership of a suitable and recognised professional body such as the Chartered Institute of Building Services Engineers (CIBSE) or equivalent with experience is a requirement of this lot.

EVALUATION

CRITERIA CONTINUED



Workstream 3 – Asset Management Consultancy

Lot	Asset Management	Asset Management Qualifications (Mandatory)
3a	EPC Assessments	The requirements for this lot are that bidders are Domestic Energy Assessor (DEA) certified for domestic and Non-Domestic Energy Assessor (NDEA) certified for non-domestic. Registration with government departments according to current legislation such as the Department for Levelling up, Housing and Communities (DLUHC) is a requirement for this lot.
3b	Retrofit Consultancy (PAS 2035 and 2038)	The requirements for this lot are that bidders are certified and hold a current valid PAS related qualification such as a PAS Coordinator to cover both domestic and non-domestic installations and assume responsibility for the management of all roles.
3c	Digital Coordinator	The requirements for this lot are that bidders have validated BIM experience and a background in architecture, structural or mechanical, electrical systems etc. Qualifications from an industry recognised source such as via The Institution of Structural Engineers (IstructE), Chartered Institute of Building (CIOB), British Standards institute (BSI) etc are required.

EVALUATION

CRITERIA CONTINUED

Workstream 4 – Health and Safety Consultancy

Lot	Professional	Health & Safety Qualifications (Mandatory)
4	Health & Safety Advisor/ Consultant	The requirements for this lot are that bidders are competent and experienced and hold a suitable qualification such as the National Examinations Board in Occupational Safety and Health (NEBOSH), or Institute of Occupational Safety and Health (IOSH) at a suitable level.

Compliance with Equality Act 2010

Applicants were required to evidence through several confirmatory statements that they are compliant with the Equality Act 2010 and have robust measures in place to promote equality and diversity within their organisation.



EVALUATION

CRITERIA CONTINUED

Quality Weighting 70%

General Quality Questions 40%

Gold Standard

Questions with regard to raising awareness of the standard, obtaining reliable information and prioritising safety, net zero and compliance.

Framework Management

Questions focussed on communication and collaboration, customer service and business continuity.

Social Value

Focused on improving the environment and local initiatives.

Professional Capability Questions 30%

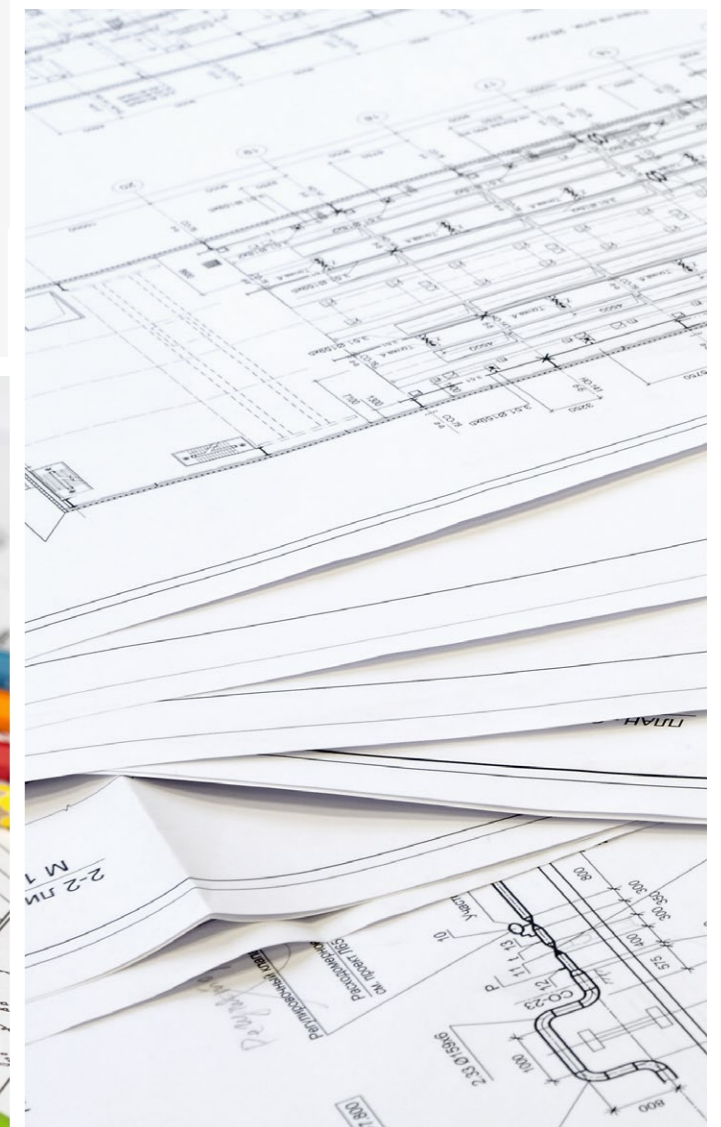
Certification/Accreditation
Discipline – Technical Capability



Price Weighting 30%

The pricing element of the evaluation process accounted for 30% of the overall score.

The breakdown of the pricing evaluation for each lot varies, however, the price weighting for every lot is 30%.



Why has this framework been developed?

This framework has been developed to provide an efficient, value for money procurement route for local authorities; registered social landlords; councils, boards, and trusts, and other public sector bodies seeking a comprehensive range of high-quality consultancy services across multiple disciplines.

Suitable for public sector refurbishment and new build projects of all sizes, it will enable organisations to access high quality pre-approved suppliers of all sizes who can deliver projects across a range of public buildings including:

- > Publicly funded schools, universities, and colleges
- > NHS healthcare buildings
- > Fire, ambulance, and police stations
- > Other public buildings and associated works
- > Residential properties (when part of a mixed-use development)
- > Student accommodation
- > Commercial to residential conversions
- > Community buildings
- > Public offices

Key benefits - at a glance:

- ✓ Higher service standards through access to innovative companies of varying sizes, who are experts in collaboration
- ✓ Greater customer service by focussing on collaboration and social value
- ✓ A diverse supply base that reflects the London & SE communities we serve
- ✓ A sustainable supply base due to the flexible structure and 6 year term of the framework

About this framework - CN 2021/S 000-003775, CAN 2022/S 000-000393

The Multi-Disciplinary Consultancy Services Framework is the first framework of its kind to have been provided by LHC to the London and South East region.

The tender was carried out in strict accordance with the EU Procurement Directive and UK public sector procurement rules. Places on the framework were awarded to 97 different suppliers in 12 workstreams. The companies appointed to the framework are registered, qualified organisations with a track record in public sector.

The term of the framework is from **11th January 2022 – 10th January 2028**. However, individual call off projects can be completed beyond the six-year duration of the framework as long as a contract is in place prior to the framework expiry date.



ABOUT THIS FRAMEWORK OUR VISION



The MDC1 framework has been created to help organisations build capacity strength and provide a comprehensive range of high-quality consultancy services across multiple disciplines to the public sector.

Following client feedback on the restrictive nature of value bands, combined with the vision to remove barriers for SMEs, this framework has been designed to be open and transparent.

Value bands have been removed which means full visibility of work to any company within a discipline, and the ability to apply for any call-off. The transparency and ethos of the framework encourages micro-SMEs to collaborate or partner with larger companies to bid, which in turn encourages growth through the six year life of the framework, making it more sustainable in the long term.

Our Client Support Managers and Technical Support Managers will be on hand to provide guidance around how to short-list applicants if a smaller list of bidders is required.

Aimed at projects of all sizes to meet client need and truly reflect the current market, it will also help organisations to offer something more through the evaluation of bidders' focus on EDI and customer service.



“ Our vision is to provide the most realistic and effective solutions in public sector procurement whilst driving equal opportunity, reducing barriers to entry for smaller businesses, and appointing companies with diverse leadership and workforces that reflect the regions and communities that the framework will serve. ”

Jennifer Castle
Director of London and South East

WORKSTREAM OPTIONS

We have developed 12 workstreams reflecting 11 individual disciplines alongside one multi-discipline workstream to cater for the different types of consultancy services available across the public sector. The workstreams are as follows:

Workstream 1: Architects (excluding London)	Workstream 2: Building Services Engineers	Workstream 3: Building Surveyors
Workstream 4: Clerk of Works	Workstream 5: Quantity Surveyors	Workstream 6: Employers Agents
Workstream 7: Planning Consultants	Workstream 8: Principal Designers	Workstream 9: Project Managers
Workstream 10: Structural Engineers	Workstream 11: Civil Engineers	Workstream 12: Multi-Discipline Services (covers all workstreams)

Regional areas covered:

I - London

J - South East England

Berkshire, Buckinghamshire and Oxfordshire

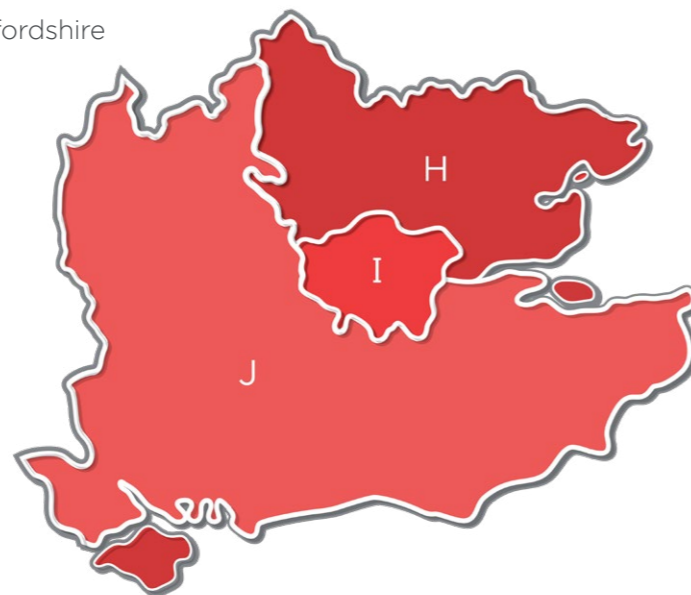
Surrey East and West Sussex

Hampshire, Isle of Wight and Kent

H - East of England

Bedfordshire & Hertfordshire

Essex



APPOINTED COMPANIES

ACROSS LONDON AND THE SOUTH EAST OF ENGLAND

The following 114 companies have been appointed to MDC1 after successfully completing the two-stage application and tendering process:

Workstream 1 - Architects (excluding London)		
Micro-Enterprise	Small Enterprise	Medium+ Enterprise
Architecture00	Austin-Smith:Lord	Baily Garner
Autor	DSDHA	BPTW
Daykin Marshall Studio	GSSArchitecture	Jestico + Whiles + Associates
Hayhurst and Co	RCKa	Karakusevic Carson Architects
KAEBCA	Rock Townsend	Levitt Bernstein Associates
TOCA	Wagh Thistleton Architects	LSI Architects (Design)

Workstream 2 - Building Services Engineers	
Small Enterprise	Medium+ Enterprise
Butler & Young Associates	Couch Perry Wilkes
Malachy Walsh & Partners	Clancy Consulting
Pinnacle ESP	Buro Happold
--	BDP
--	Desco (Design & Consultancy)
--	Stantec UK

Workstream 3 - Building Surveyors		
Micro-Enterprise	Small Enterprise	Medium+ Enterprise
Thomas & Thomas	Arcus Consulting	Baily Garner
--	Blakeney Leigh	Currie & Brown UK
--	Daniel Connal	Gleeds Management Services
--	Richard Jackson	Hunters
--	Silver DCC	Potter Raper
--	Welling Partnership Property and Construction Consultants	Watts Group

Workstream 4 - Clerk of Works		
Micro-Enterprise	Small Enterprise	Medium+ Enterprise
BPP Construction Consultants	Betteridge & Milsom	Airey Miller
--	Hickton Consultants	Baily Garner
--	RG+P	Currie & Brown UK
--	Silver DCC	John Rowan and Partners
--	--	Potter Raper
--	--	Rund Partnership

*LISTED ALPHABETICALLY

APPOINTED COMPANIES

CONTINUED

Workstream 5 - Quantity Surveyors		
Micro-Enterprise	Small Enterprise	Medium+ Enterprise
Costplan Services (South East)	Academy Consulting Solutions	Atkins Réalis
DMR Surveyors	Daniel Connal	John Rowan and Partners
JPN Projects	Fusion Project Management	Potter Raper
Marstan BDB	GSSArchitecture	Stace
Quaye Services	Keegans	Summers Inman Construction and Property Consultants
--	Playle & Partners	WT Partnership

Workstream 6 - Employers Agents		
Micro-Enterprise	Small Enterprise	Medium+ Enterprise
BPP Construction Consultants	Academy Consulting Solutions	Baily Garner
Costplan Services (South East)	Arcus Consulting	Faithorn Farrell Timms
JPN Projects	Keegans	Potter Raper
Marcel Hendricks & Partners	Playle & Partners	Rund Partnership
Marstan BDB	Silver DCC	Watts Group
TOCA	Welling Partnership Property and Construction Consultants	WT Partnership

Workstream 7 - Planning Consultants	
Micro-Enterprise	Medium+ Enterprise
TOCA and NTA Planning	HKS Architects
--	Montagu Evans
--	Quod
--	Stantec UK
--	Turley

Workstream 8 - Principal Designers		
Micro-Enterprise	Small Enterprise	Medium+ Enterprise
Pierce Hill Project Services	Arcus Consulting	Airey Miller
Safety Advisors	Playle & Partners	Faithorn Farrell Timms
--	RISE Management Consulting	John Rowan and Partners
--	Silver DCC	Martin Arnold
--	--	Watts Group
--	--	WT Partnership

*LISTED ALPHABETICALLY

APPOINTED COMPANIES

CONTINUED

Workstream 9 - Project Managers		
Micro-Enterprise	Small Enterprise	Medium+ Enterprise
Marcel Hendricks & Partners	Academy Consulting Solutions	AHR Building Consultancy
One Consulting Group	Fusion Project Management	Atkins Réalis
TOCA	GSSArchitecture	Gleeds Management Services
--	Initiate Consulting	HKS Architects
--	Keegans	John Rowan and Partners
--	Pulse Associates	Stace

Workstream 10 - Structural Engineers		
Micro-Enterprise	Small Enterprise	Medium+ Enterprise
Beta Design Consultants	Egniol Consulting	BDP
MPN UK	HBL Associates	Buro Happold
Tisserin Engineers	Malachy Walsh & Partners	ByrneLooby Partners
--	Richard Jackson	Campbell Reith Hill
--	Structa	Clancy Consulting
--	--	Curtins Consulting

Workstream 11 - Civil Engineers		
Micro-Enterprise	Small Enterprise	Medium+ Enterprise
Beta Design Consultants	Egniol Consulting	ByrneLooby Partners
IK Consulting Engineers	Malachy Walsh & Partners	Campbell Reith Hill
--	Richard Jackson	Clancy Consulting
--	Structa	Curtins Consulting
--	--	Perega
--	--	Price & Myers

Workstream 12 - Multi-Discipline Services	
Small Enterprise	Medium+ Enterprise
ADP Architecture	Bailey Partnership (Consultants)
Capital Property & Construction Consultants	Kier Business Services
ECD Architects	McBains
Fraser Brown MacKenna Architects	Pick Everard
The Fulker Consultancy	Ridge and Partners
--	Turner & Townsend

*LISTED ALPHABETICALLY

The process involved a two-stage Restricted Tender that started with a qualification assessment. Shortlisted tenderers were then invited to submit an Invitation To Tender (ITT).

Accreditations and certifications

Each bidder was asked to demonstrate that they were suitably registered and had the necessary skills, expertise, and qualifications needed, alongside the health and safety, environmental, equality and quality ISO certifications (or equivalent) in place to be appointed to this framework. Many of our appointments are BIM Ready or working towards this.

Financial due diligence - applicants were assessed on their turnover and checked via Creditsafe. The results of this check were assessed on a pass/fail basis.

ITT award assessment

Following the qualification stage, the ITT award evaluation process comprised a quality/price criterion, with the sum of both scores establishing the Most Economically Advantageous Tenders (MEAT).

Award weighting criteria

The tenders were evaluated on a **70% quality** and **30% price** split using 'deviation from mean' formulas instead of the usual best price rank. This was to make the framework as balanced as possible and even the playing field for micro-SMEs, small enterprises, and medium to large companies.

Quality assessment – 70% weighting

The quality element was assessed based on the applicants' written responses to a range of technical questions, with bidders evaluated based on scenarios reflecting real life situations that clients would encounter. These assessed areas such as customer service, site and procurement risk, and flexibility and sensitivity to differing needs, such as EDI matters.

Price assessment – 30% weighting

The pricing element of the evaluation process accounted for 30% of the overall score. Applicants could apply a regional uplift to their prices and all submissions provided price scores per workstream.



ARCHITECT DESIGN SERVICES

Why has this framework been developed?

This LHC framework, which is available across London, has been delivered in partnership with Southwark Council.

By combining our procurement and design expertise, LHC and Southwark Council aimed to remove the procurement-related barriers often faced by the architectural community, in an effort to attract a more diverse range of practices.

Historically, these barriers can lead to challenges, such as the same companies being awarded work, a bespoke approach not being taken to urban-dense environments and an overall lack of innovative design. In turn, these challenges can prevent the public sector from being able to appoint the best quality design teams.

In turn, these challenges can prevent the public sector from being able to appoint the best quality design teams.

The ADS1.1 Framework gives additional focus to equality, diversity and inclusion (EDI) and social value-related criteria.

It was designed following extensive engagement sessions with a diverse range of practices and the wider architectural community. Their feedback shaped the ADS1.1 process so that we could create something that reflected the market and was widely accessible to the talent we wanted to attract.

The approach we adopted made sure there was no positive discrimination and that all successful candidates were selected on merit and via a fair and open process.

We have appointed a range of diverse and highly talented practices to the framework, many of whom are minority-led practices. Hailing from Southwark, Hackney, Lambeth, Islington, Camden and Tower Hamlets, they have lived experience of London's under-privileged communities, and entirely new skills and fresh approaches to urban regeneration and community engagement.

Work to further build upon what has been achieved by ADS1.1 is on-going for LHC and Southwark Council, which includes implementing a national template of good practice for the entire construction industry.

Key benefits - at a glance:

- ✓ Architectural design-focused framework
- ✓ Shaped by architectural companies
- ✓ Access to more diverse architects
- ✓ Better community engagement and design results

ABOUT LHC AND FRAMEWORKS

LHC provides OJEU-compliant frameworks that can be used by local authorities, social landlords and other public sector bodies to procure works, products and services for the construction, refurbishment and maintenance of social housing, schools and public buildings.

We're recognised as being one of the most experienced and respected providers of construction sector procurement frameworks.

Established in 1966, LHC are acknowledged as one of the most experienced and respected providers of procurement frameworks in the construction sector.

More than 200 publicly-funded organisations across England use our frameworks to procure works, goods and services to construct, refurbish and maintain social housing, schools and public buildings.

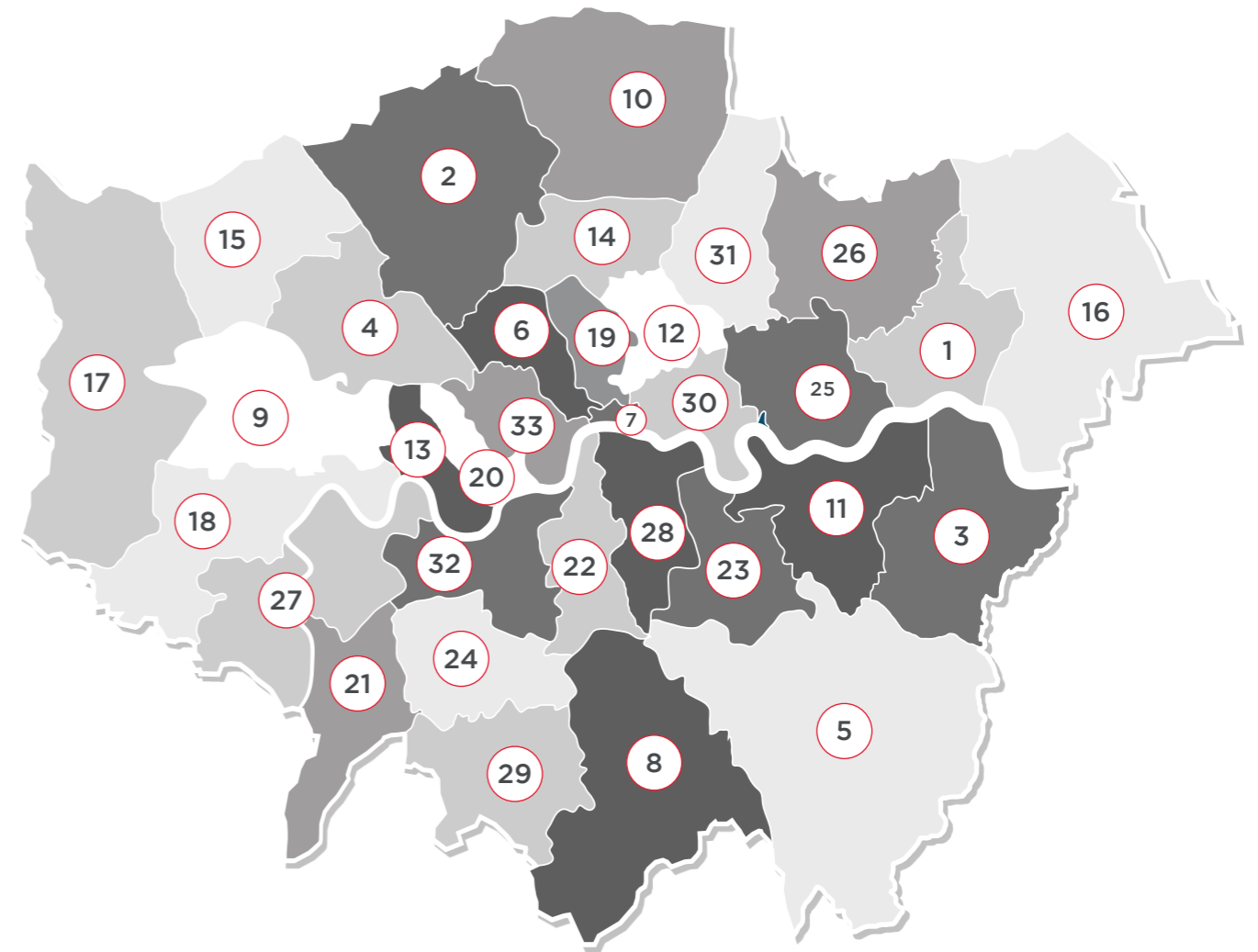
They include:

- > Local authorities and any subsidiaries and joint-venture vehicles of those local authorities.
- > Registered Social Landlords (RSL), Tenant Management Organisations (TMOs) & Arm's Length Management Organisations (ALMOs)
- > Health Authorities, Councils, Boards and Trusts
- > Publicly funded schools
- > Universities, colleges and further education establishments
- > Police forces, fire and rescue services
- > Registered charities

For further details on the authorities currently using our frameworks, visit:
lse.lhcprocure.org.uk/who-we-work-with/

“ Our purpose is to deliver better buildings and homes that enhance local communities. ”

ALL LONDON CONTRACTING AUTHORITIES:



- | | |
|----------------------------|----------------------------|
| 1. Barking & Dagenham | 18. Hounslow |
| 2. Barnet | 19. Islington |
| 3. Bexley | 20. Kensington and Chelsea |
| 4. Brent | 21. Kingston upon Thames |
| 5. Bromley | 22. Lambeth |
| 6. Camden | 23. Lewisham |
| 7. City of London | 24. Merton |
| 8. Croydon | 25. Newham |
| 9. Ealing | 26. Redbridge |
| 10. Enfield | 27. Richmond upon Thames |
| 11. Greenwich | 28. Southwark |
| 12. Hackney | 29. Sutton |
| 13. Hammersmith and Fulham | 30. Tower Hamlets |
| 14. Haringey | 31. Waltham Forest |
| 15. Harrow | 32. Wandsworth |
| 16. Havering | 33. Westminster |
| 17. Hillingdon | |

TENDER AND EVALUATION PROCESS

The process involved a two-stage Restricted Tender that started with an initial Selection Questionnaire phase. Shortlisted tenderers were then invited to submit an Invitation To Tender (ITT) response.

STAGE 1: Selection Questionnaires and Evaluation

What was involved

Applicants applied for a maximum of three Lots and one value band.

For:

- **Value band 1 (£0 to £5m)** - no turnover required
- **Value band 2 (£5m to £20m)** - a minimum turnover of £500,000 was required
- **Value band 3 (£10m+)** - a minimum turnover of £1 million was required
- **Lot 7** - a maximum turnover of £2 million was required

Applicants were required to:

- **Answer mandatory selection questions** - that covered details, including grounds for exclusion of applicants based on criminal convictions and the non-payment of taxes, insolvency, professional misconduct, non-payment of social security contributions and validation that applicants paid London Living Wage.
- **Have at least £2million Public Liability, Employees Liability and Professional Indemnity insurance cover.**
- **Pass the financial due diligence assessment, including a credit check and 2 years of accounts.**
- **Demonstrate they were appropriately resourced** - this included being ARB registered and committed to working towards BIM Level 2.

What we were looking for

Written and visual submissions from within the last 7 years that evidenced their work as follows:

- 1 unbuilt case study for Lot 1
- 1 built case study for Lots 2 to 6
- 2 case studies for Lot 7 (1 built and 1 unbuilt project)

**In order to progress to the next stage, ITT, applicants had to score 60%.
(Details about the second phase can be found on the opposite page).**

STAGE 2: Invitation To Tender (ITT) Documentation

What was involved

This stage of the process involved two main elements for Lots 1 to 6. Tenderers had to:

1. **Respond** to technical and quality questions.
2. **Complete** a pricing schedule.

They were also required to provide written and visual submissions that explained their approach to design, communication and engagement methodology. Details of how they achieve value management from the outset and how their experience can be applied to the 8 Southwark Fairer Future Commitments were also required.

At this stage, we were looking for companies to evidence their technical ability to provide the work they were tendering for.

Overall, we were looking for:



EDI was a significant focus area

One of the unique features of this framework was the extended interview for some of the candidates. It was particularly effective in giving the smaller, emerging and diverse practices a platform to showcase their expertise.

For Lot 7, the candidates were also required to participate in a case study interview.

ADS1.1 Framework Lots - explained

Lots 1 to 6 are designed to: Appoint practices who are experienced in delivering projects for the relevant category.

Lot 7 is designed to: Remove the barriers some smaller or emerging practices frequently face when trying to secure public sector work. We refer to this as the 'New Design' Lot (for more details, turn to page 14).

How the Lots link with the value bands:

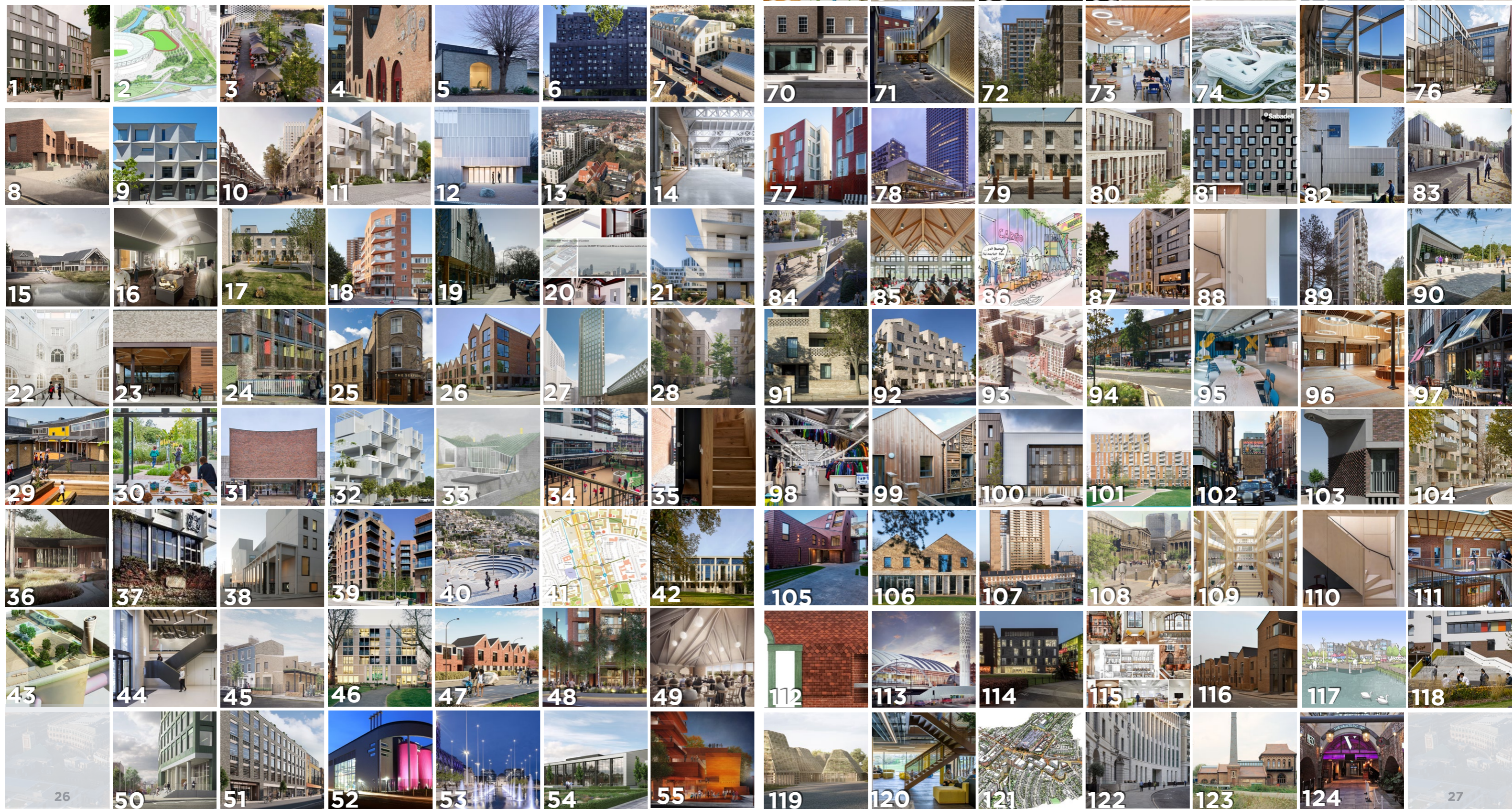
- Lots 1, 5, 6 & 7 cover all values.
- Lots 2, 3 & 4 span value band 1 (£0 to 5m), value band 2 (£5m to £20m) and value band 3 (£10m+).



APPOINTED COMPANIES - AN OVERVIEW

Over the next few pages, we've listed the architectural practices that have been appointed to the ADS1.1 Framework after successfully completing the two-stage application and tendering process.

These Appointed Companies will play an instrumental role in bringing the framework to life and transforming public sector design throughout London for many years to come. In the meantime, here's a glimpse of some of their key projects:



THE APPOINTED COMPANIES - LOTS 1 AND 2



LOT 1

Master Planning
and Feasibility

Lot focus: Preparation and production of strategic or project-specific masterplans and feasibility studies.

Applicable value bands: **All**

Appointed Companies:

1. Stitch Studio
2. Maccreanor Lavington
3. Weston Williamson + Partners
4. Farrells
5. Allies and Morrison
6. Studio Egret West
7. 5th Studio
8. Patel Taylor
9. dRMM
10. Panter Hudspith Architects
11. Cullinan Studio
12. Proctor and Matthews Architects
13. insider-outsider + Native Studio
14. Urban Symbiotics



LOT 2

Education/Social Care/
Community Provisions

Lot focus: Full architect services for new, remodelled and refurbishment projects within the education, social care and non-housing community buildings sectors.

Applicable value bands: **1, 2 & 3**

Value Band 1 (£0 - £5M)

Appointed Companies:

- | | |
|----------------------------------|-------------------------------------|
| 1. Chadwickdryerclarke Studio | 6. Gatti Routh Rhodes Architects |
| 2. Inter Urban Studios | 7. Fraser Brown Mackenna Architects |
| 3. Innes Associates | 8. Landolt and Brown Architects |
| 4. Black Architecture | 9. Freehaus |
| 5. Sarah Wigglesworth Architects | 10. Knox Bhavan Architects |

Value Band 2 (£5M - £20M)

Appointed Companies:

- | | |
|--|-----------------------------|
| 1. Levitt Bernstein | 8. Turner Works |
| 2. Marks Barfield Architects | 9. Morris+Company |
| 3. van Heyningen and Haward Architects | 10. Twelve Architects |
| 4. Haverstock | 11. HLM Architects |
| 5. Alison Brooks Architects | 12. David Morley Architects |
| 6. Cottrell & Vermeulen Architecture | 13. Serie Architects |
| 7. Cullinan Studio | |

Value Band 3 (£10M+)

Appointed Companies:

- | | |
|----------------------------------|------------------------------|
| 1. Penoyre & Prasad | 7. Hawkins\Brown |
| 2. Allford Hall Monaghan Morris | 8. Architecture Initiative |
| 3. Scott Brownrigg | 9. Jestico + Whiles |
| 4. Feilden Clegg Bradley Studios | 10. Jamie Fobert Architects |
| 5. Tim Ronalds Architects | 11. Mangera Yvars Architects |
| 6. Nicholas Hare Architects | |

THE APPOINTED COMPANIES - LOTS 3 AND 4



LOT 3

New Homes

Lot focus: Full architect services for new low, medium or high-rise housing projects.

Applicable value bands: **1, 2 & 3**

Value Band 1 (£0 - £5M)

Appointed Companies:

- | | |
|-------------------------|----------------------------|
| 1. Metaphorm Architects | 6. Architecture Initiative |
| 2. Archio | 7. daab Design Architects |
| 3. Mowat and Company | 8. Mole Architects |
| 4. Cottrell & Vermeulen | 9. Freehaus |
| 5. Stolon Studio | 10. Unionne |

Value Band 2 (£5M - £20M)

Appointed Companies:

- | | |
|-------------------------------|------------------------------|
| 1. Penoyre & Prasad | 6. Adam Khan Architects |
| 2. Haptic Architects | 7. Alison Brooks Architects |
| 3. Coffey Architects | 8. Peter Barber Architects |
| 4. Child Graddon Lewis | 9. Stephen Taylor Architects |
| 5. Brisac Gonzalez Architects | 10. Serie Architects |

Value Band 3 (£10M+)

Appointed Companies:

- | | |
|----------------------------------|---------------------------|
| 1. Levitt Bernstein | 8. Morris+Company |
| 2. Geraghty Taylor | 9. dRMM Ltd |
| 3. Bell Phillips Architects | 10. Conran and Partners |
| 4. Maccreeanor Lavington | 11. de Metz Forbes Knight |
| 5. Allies and Morrison | 12. Haworth Tompkins |
| 6. Cullinan Studio | 13. Adjaye Associates |
| 7. Karakusevic Carson Architects | |



LOT 4

Commercial/
Industrial

Lot focus: Full architect services for new, remodelled and refurbishment projects within the commercial and industrial buildings sectors.

Applicable value bands: **1, 2 & 3**

Value Band 1 (£0 - £5M)

Appointed Companies:

- | | |
|---------------------|--------------------------------------|
| 1. Rock Townsend | 6. Boon-Brown |
| 2. Al-Jawad Pike | 7. Projects Office |
| 3. WAM design | 8. Wren Architecture & Design |
| 4. Innes Associates | 9. Robinson Kenning & Gallagher |
| 5. Moll Architects | 10. insider-outsider + Native Studio |

Value Band 2 (£5M - £20M)

Appointed Companies:

- | | |
|------------------------|--------------------|
| 1. Coffey Architects | 7. Architecture 00 |
| 2. ColladoCollins | 8. MCM |
| 3. Gradon Architecture | 9. Hale |
| 4. GPAD | 10. Unionne |
| 5. Turner Works | 11. Pattern Design |
| 6. Gort Scott | |

Value Band 3 (£10M+)

Appointed Companies:

- | | |
|----------------------------------|-----------------------|
| 1. Marks Barfield Architects | 7. Wilkinson Eyre |
| 2. Nicholas Hare Architects | 8. Morris+Company |
| 3. de Metz Forbes Knight | 9. TateHindle |
| 4. Karakusevic Carson Architects | 10. Jestico + Whiles |
| 5. Panter Hudspith Architects | 11. Adjaye Associates |
| 6. ACME | |

THE APPOINTED COMPANIES - LOTS 5 AND 6

LOT 5

Conservation
and Heritage

Lot focus: Preparation and production of strategic or project-specific masterplans and feasibility studies.

Applicable value bands: **All**

Appointed Companies:

1. Purcell
2. MICA Architects
3. SODA Studio
4. dRMM
5. Avanti Architects
6. Cartwright Pickard
7. Tim Ronalds Architects
8. LTS Architects
9. Studio Egret West
10. de Metz Forbes Knight
11. Chris Dyson Architects
12. Witherford Watson Mann
13. Adam Richards Architects
14. Curl La Tourelle Head
15. Asif Khan

LOT 6

Public Realm
and Landscape

Lot focus: Full architect or landscape architect services for projects within the public realm.

Applicable value bands: **All**

Appointed Companies:

1. Fereday Pollard
2. Tonkin Liu
3. Graeme Massie Architects
4. Patel Taylor
5. BBUK Studio
6. Project Centre
7. EVA Studio
8. Neiheiser Argyros
9. LT Studio
10. Studio Weave
11. NOOMA studio

THE APPOINTED COMPANIES - LOT 7



LOT 7

The 'New Design' Lot

Lot focus: This Lot was created to specifically remove the barriers some smaller or emerging practices regularly face when trying to secure public sector work. More than 80% of Lot 7 Appointed Companies were not on any other public sector framework at the point of being appointed to ADS1.1.

The challenges

These practices are often overlooked due to the fact they're often competing against companies with substantial bid teams. They're also consistently required to demonstrate previous experience in use classes they are yet to explore. As a result, they become 'invisible' to public sector delivery teams.

Our solution

We implemented a £2million turnover cap and invited these smaller practices to evidence their expertise through one built and one unbuilt project. More importantly, we invited them to take part in face-to-face interviews with the evaluation panel, giving them the opportunity to demonstrate their innovation and design expertise in person.

This Lot can be used to procure works of any use class and is underpinned by appointed practices demonstrating the highest quality skillset and design principles. Direct award is possible, however, to ensure the brief is delivered to the best possible quality (and by the most relevant practice), the standard approach is a mini competition.

Appointed Companies:

- | | |
|----------------------------------|--|
| 1. David Leech Architects | 12. Hall McKnight |
| 2. Gatti Routh Rhodes Architects | 13. Gibson Thornley |
| 3. SODA Studio | 14. Walker Hay Architects |
| 4. Al-Jawad Pike | 15. Patalab |
| 5. Daykin Marshall Studio | 16. Denizen Works |
| 6. 31/44 Architects | 17. Mailen Design |
| 7. Assorted Skills + Talents | 18. Timothy Smith & Jonathan Taylor Architects |
| 8. Mikhail Riches | 19. Tonkin Liu |
| 9. TDO Architecture | 20. Stonewood Design |
| 10. Chadwickdryerclarke Studio | 21. insider-outsider + Native Studio |
| 11. DRDH Architects | 22. Gbolade Design Studios |

These 3 services are optional on all Lots



Employers Agent



Principal Designer



Contractor Administrator

MAKING DIVERSITY ONE OF THE KEY BUILDING BLOCKS OF ARCHITECTURAL DESIGN

Adapting to the current environment, particularly post-Covid, is crucial for 21st century architects. While they continue to play a key role in helping address the current housing and climate crisis, they are also tasked with truly understanding and meeting the rapidly-evolving needs of local communities.

Fundamental foundation for the future

Historically, the architecture industry has faced another significant challenge – a lack of diversity. We believe building an inclusive and diverse range of practices that represents local culture is fundamental for the sector moving forward.

By creating this framework, we are providing clients with access to a broad range of architects with the skills and experience to deliver on a multitude of public procurement projects.

We have also been able to prove that a more diverse supply base that represents London's urban communities is achievable

All of our ADS1.1 Appointed Companies were subjected to a rigorous assessment and selection process that included structured, specific and relevant social value questions around EDI activities, customised scoring and award criteria, and face-to-face interviews.

The interview phase is one of the most unique aspects of this framework. It provided companies that wouldn't normally be eligible for public sector frameworks with a platform to showcase their expertise. Overall, we spent more than 80 hours interviewing applicants.

Delivering diversity on multiple levels

All of the ADS1.1 Appointed Companies delivered on social value in every aspect of their business - recruitment and retention, advocacy and outreach work, supporting minority networks, sponsoring disadvantaged students into the profession and through their lived experience and ability to connect with under-represented communities and translate their needs into design.

Ultimately, the framework is helping pave the way for greater EDI within public sector procurement by:

- **Providing** a list of architectural suppliers that represents the diversity of London's local communities and:
 - Is made up of local and diverse architectural talent with the expertise to deliver bespoke and innovative schemes
 - Plans to employ and upskill locally and work with local people
- **Helping** create better homes for London communities that help address local problems
- **Generating** improved job prospects and access to professions for historically under-represented and disadvantaged groups
- **Encouraging** more young people to get involved in designing the built environment around them, which also includes:
 - Improving the retention of ethnic minorities, especially black professionals, within architecture
 - Providing greater access to construction professions for ethnic minority young people

The ADS1.1 Framework Evaluation Panel

INDEX OF ARCHITECTS

1. **31/44 Architects**, "Redchurch Townhouse" www.3144architects.com
2. **5th Studio**, "Bow Freight Campus Masterplan" www.5thstudio.co.uk
3. **ACME**, "Eastland Town Centre" www.acme.ac
4. **Adam Khan Architects**, "Central Somers Town, Camden (Photography by David Grandorge)" www.adamkhan.co.uk
5. **Adam Richards Architects**, "Walmer Castle and Gardens Learning Centre and Café" www.adamrichards.co.uk
6. **Adjaye Associates**, "Sugar Hill Mixed-Use Development in Harlem, New York, USA" www.adjaye.com
7. **Alison Brooks Architects**, "Cohen Quad" www.alisonbrooksarchitects.com
8. **Al-Jawad Pike**, "Daubeney Road" www.aljawadpike.com
9. **Allford Hall Monaghan Morris**, "Burntwood school" www.ahmm.co.uk
10. **Allies and Morrison**, "Oswin Street, Elephant and Castle" www.alliesandmorrison.com
11. **Archio**, "London Community Land Trust Housing, Lewisham" www.archio.co.uk
12. **Architecture 00**, "MANOR Works" www.architecture00.net
13. **Architecture Initiative**, "Woodlands Quarter, Ealing" www.architectureinitiative.com
14. **Asif Khan**, "Central Square Galleries, Museum of London, West Smithfield" www.asif-khan.com
15. **Assorted Skills +Talents**, "Quintin Hogg Trust/University of Westminster Boat Club" www.assortedskillstalents.com
16. **Avanti Architects**, "Walworth Town Hall, Southwark" www.avantiarchitects.co.uk
17. **BBUK Studio**, "Goldsmith Street" www.bbukstudio.com
18. **Bell Phillips Architects**, "Marklake Court, Southwark (Photographer: Kilian O'Sullivan.)" www.bellphillips.com
19. **Black Architecture**, "The Green Man" www.black-architecture.com
20. **Boon-Brown**, "100 Brewery Road" www.boonbrown.com
21. **Brisac Gonzalez Architects** "Q4A, Clichy-Batignolles" www.brisacgonzalez.com
22. **Cartwright Pickard**, "Lambeth Town Hall" www.cartwrightpickard.com
23. **Chadwickdryerclarke Studio**, "The Stephen Perse Foundation NEW SPORTS + LEARNING BUILDING" www.chadwickdryerclarke.co.uk
24. **Child Graddon Lewis**, "Lewis Victoria Wharf" www.cgluk.com
25. **Chris Dyson Architects**, "Sekforde" www.chrisdyson.co.uk
26. **Coffey Architects Limited** "Moor's Nook, Surrey" www.coffeyarchitects.com
27. **ColladoCollins Architects**, "Rockingham Road" www.colladocollins.com
28. **Conran and Partners**, "St James Square" www.conranandpartners.com
29. **Cottrell & Vermeulen**, "Bellenden Primary School" www.cv-arch.co.uk
30. **Cullinan Studio**, "Hyde Hall Hilltop Community and Education Complex for the Royal Horticultural Society" www.cullinanstudio.com
31. **Curl La Tourelle Head**, "Grade II Listed Hornsey Library" www.clth.co.uk
32. **daab Design Architects**, "Micro House/Macro Community" www.daabdesign.co.uk
33. **David Leech Architects**, "An alley and courtyard housing" www.david-leech.co.uk
34. **David Morley Architects**, "King's Cross Academy and Frank Barnes School for Deaf Children at The Plimsoll Building" www.davidmorleyarchitects.co.uk
35. **Daykin Marshall Studio**, "Family Commune Image credit: Nick Guttridge" www.daykinmarshall.com
36. **Denizen Works**, "The Glade" www.denizenworks.com
37. **dMFK**, "1. Goldney Road 2. York House 3. Salter's Hall" www.dmfk.co.uk
38. **DRDH Architects**, "Stormen Concert hall and Library, Bodø, Norway" www.drdharchitects.co.uk
39. **dRMM**, "Trafalgar Place" www.drmm.co.uk
40. **EVA Studio**, "Tapis Rouge, Haiti" www.evastudio.co.uk
41. **Farrells**, "Sutton Town Centre masterplan" www.farrells.com
42. **Feilden Clegg Bradley Studios**, "University of Roehampton Library" www.fcbstudios.com
43. **Fereday Pollard**, "Carnwath Road" www.feredaypollard.com
44. **Fraser Brown Mackenna Architects**, "Community centre, Hackney" www.fbarchitects.com
45. **Freehaus**, "The Clement James Centre" www.freehausdesign.com
46. **Gatti Routh Rhodes Architects**, "Bethnal Green Mission Church" www.grr-architects.com
47. **Gbolade Design Studios**, "Hermitage Mews, London" www.gboladedesignstudio.com
48. **Geraghty Taylor**, "81 Commercial Way, Woking" www.geraghtytaylor.com
49. **Gibson Thornley**, "Sessay Community Centre" www.gibsonthornley.com
50. **Gort Scott**, "Harrow New Civic Centre" www.gortscott.com
51. **GPAD**, "White Lion Street Project" www.gpadlondonltd.com
52. **Gradon Architecture**, "Gateshead Energy Centre" www.gradonarchitecture.com
53. **Graeme Massie Architects**, "Centenary Square, Birmingham" www.graememassie.com
54. **Hale**, "Stihl, Camberley" www.hale-adm.com
55. **Hall McKnight**, "Gallaudet University, Washington DC" www.hallmcknight.com
56. **Haptic Architects**, "Rosemoor Studios." www.hapticarchitects.com
57. **Haverstock**, "The Belham Primary School" www.haverstock.com
58. **Hawkins\Brown**, "Ivydale Primary School" www.hawkinsbrown.com
59. **Haworth Tompkins**, "Meeting House Lane" www.haworthtompkins.com
60. **HLM Architects**, "Greenmead and Ronald Ross Primary School" www.hlmarchitects.com

61. **insider-outsider + Native Studio**, "Okun Makoko Development and Marx Circus" www.insider-outsider.com
62. **Innes Associates**, "Becket Keys" www.innesassociates.net
63. **Inter Urban Studios** "Little Lamps Nursery" www.interurbanstudios.com
64. **Jamie Fobert Architects** "Kettle's Yard, Gallery and Learning Centre." www.jamiefobertarchitects.com
65. **Jestico + Whites** "Shared Facilities Hub" www.jesticowhites.com
66. **Karakusevic Carson Architects** "Kings Crescent Estate" www.karakusevic-carson.com
67. **Knox Bhavan Architects** "Cassiobury Park, Watford" www.knoxbhavan.co.uk
68. **Landolt and Brown Architects** "Peckham Rye Station Square" www.landoltbrownportfolio.wordpress.com
69. **Levitt Bernstein** "Aylesbury Estate" www.levittbernstein.co.uk
70. **LTS Architects** "Science Gallery London" www.lts-architects.co.uk
71. **LT Studio**, "Borough High Street" www.ltstudio.co.uk
72. **Maccreeanor Lavington** "Romford Town Centre (Photographer: Tim Crocker)" www.maccreeanorlavington.com
73. **Mailen Design**, "Meadows Nursery" www.mailendesign.com
74. **Mangera Yvars Architects**, "atar Faculty of Islamic Studies" www.myaa.eu
75. **Marks Barfield Architects** "Cambridge Primary School" www.marksbarfield.com
76. **MCM** "17 Charterhouse Street - Anglo American/ DeBeers" www.mcm-uk.com
77. **Metaphorm Architects**, "Brandon Street" www.metaphorm.com
78. **MICA Architects**, "Centre Point" www.micaarchitects.com
79. **Mikhail Riches**, "Goldsmith Street, Norwich (photographer, Tim Crocker)" www.mikhailriches.com
80. **Mole Architects**, "Eddington, Cambridge" www.molearchitects.co.uk
81. **Moll Architects**, "Banc Sabadell Headquarters" www.mollarchitects.com
82. **Morris+Company** "1. Belle View 2. Energy Hub 3. R7, Kings Cross" www.morrisandcompany.com
83. **Mowat and Company** "Morpeth Road Housing for Peabody" www.mowatandco.com
84. **Neiheiser Argyros** "The Tide Linear Park" www.neiheiserargyros.com
85. **Nicholas Hare Architects** "King's High School, Warwick" www.nicholashare.co.uk
86. **NOOMA Studio** "A Vision for Local High Streets - Atlantic Road" www.nooma.studio
87. **Panter Hudspith Architects** "1. Woolwich Exchange 2. Orchard Gardens" www.panterhudspith.com
88. **Patalab**, "The Gables" www.patalab.com
89. **Patel Taylor**, "1. London Dock 2. Thames Barrier Park" www.pateltaylor.co.uk
90. **Pattern Design**, "The Battle of Britain Visitor Centre" www.bdp-pattern.com
91. **Penoyre & Prasad** "The Bobby Moore Secondary Academy (Photographer: @DennisGilbert)" www.penoyreprasad.com
92. **Peter Barber Architects** "Peckham Road Mansions" www.peterbarberarchitects.com
93. **Proctor and Matthews Architects**, "South Thamesmead" www.proctorandmatthews.com
94. **Project Centre** "Eastcote Town Centre" www.projectcentre.co.uk
95. **Projects Office** "accuRx Office" www.projectsoffice.co
96. **Purcell**, "Kresen Kernow" www.purcelluk.com
97. **Robinson Kenning & Gallagher**, "Old Union Yard, 229 Union Street, Southwark" www.rkgpartnership.co.uk
98. **Rock Townsend** "Berghaus HQ, Sunderland" www.rocktownsend.co.uk
99. **Sarah Wigglesworth Architects** "Mellor School, Forest School Extension by SWA, 2016. Credit Becky Lane." www.swarch.co.uk
100. **Scott Brownrigg** "Harris Invictus Academy, Croydon" www.scottbrownrigg.com
101. **Serie Architects** "Carrick House, Royal Wharf, London" www.serie.co.uk
102. **SODA Studio** "Walker's Court & Boulevard Theatre (Photographer: Jack Hobhouse.)" www.sodastudio.co.uk
103. **Stephen Taylor Architects**, "Cadix, Antwerp, Belgium" www.stephentaylorarchitects.co.uk
104. **Stitch Studio** "Acton Gardens Phase 7.1" www.stitch-studio.co.uk
105. **Stolon Studio**, "Kaolin Court, Lewisham" www.stolon.co.uk
106. **Stonewood Design**, "Kingswood Pre-prep School and Nursery" www.stonewooddesign.co.uk
107. **Studio Egret West**, "1. East Wick and Sweetwater 2. Balfron Tower" www.studioegretwest.com
108. **Studio Weave**, "Bank Junction Improvement" www.studioweave.com
109. **TateHindle**, "The Salvation Army, New Territorial Headquarters" www.tatehindle.co.uk
110. **TDO Architecture**, "Fab House (Photographer: Peter Cook.)" www.tdoarchitecture.com
111. **Tim Ronalds Architects**, "Alley's School Lower School" www.timronalds.co.uk
112. **Timothy Smith & Jonathan Taylor Architects**, "Cliveden Gardens" www.smithandtaylorllp.com
113. **Tonkin Liu**, "1. Kingston Ancient Market 2. Manchester Tower of Light" www.tonkinliu.co.uk
114. **Turner Works**, "Mountvire Academy" www.turner.works
115. **Twelve Architects**, "The Passmore Centre, Southwark" www.twelvearchitects.com
116. **Unionne**, "Herbert Road" www.unionne.co
117. **Urban Symbiotics**, "Walton Manor Masterplan" www.urbansymbiotics.com
118. **van Heyningen and Haward Architects** "Bow School" www.vhh.co.uk/our-work/bow-school
119. **Walker Hay Architects** "Sevenoaks Nature and Wildlife Reserve" www.walkerhay.com
120. **WAM design**, "The Reef at Holiday Extras, Hythe, UK" www.wam.design
121. **Weston Williamson + Partners** "Future Wimbledon Masterplan" www.westonwilliamson.com
122. **Wilkinson Eyre** "8 Finsbury Circus" www.wilkinsoneyre.com
123. **Witherford Watson Mann** "Walthamstow Wetlands" www.wwmarchitects.co.uk
124. **Wren Architecture & Design** "Market Place Bolton" www.wrenarchitecture.com

CALL-OFF AWARD OPTION

THE FRAMEWORK ALLOWS PARTNERS THE OPTION OF:



When calling off projects, clients can use any one of a range of standard forms of building contract including JCT/SBCC, NEC/NEC4, ACE, PPC, TPC, FAC1, or their own in-house agreement.

ELIGIBILITY

LHC is a not-for-profit organisation, governed by public law and a central purchasing body providing procurement services. Over 200 publicly funded organisations throughout England use LHC frameworks to procure works, goods and services to construct, refurbish and maintain social housing, schools and public buildings:

- Local Authorities and any subsidiaries and joint-venture vehicles of those Local Authorities.

- Registered Social Landlords (RSL), Tenant Management Organisations (TMOs) & Arm's Length Management Organisations (ALMOs)
- Registered Charities
- Publicly Funded Schools
- Universities and Further Education Establishments
- Colleges
- Police Forces
- Fire and Rescue services
- Health Authorities, Councils, Boards and Trusts

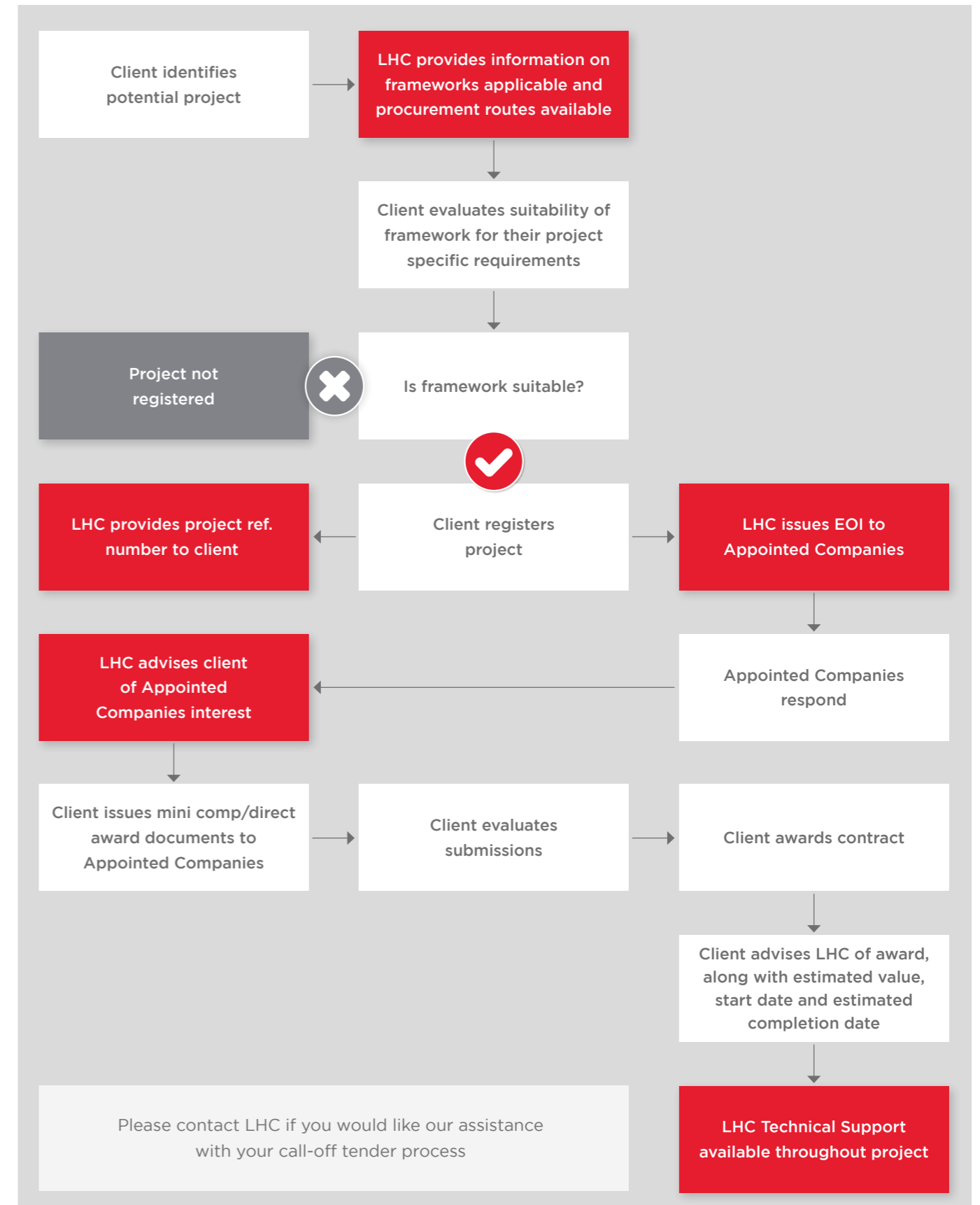
Details of those contracting authorities identified are listed at: lse.lhcprocure.org.uk/who-we-work-with/

GENERAL TERMS AND CONDITIONS

LHC uses the FAC-1 standard form of contract to manage our frameworks. The LHC pro forma, which should be read in conjunction with the FAC-1 in published form, details the terms and conditions that govern the operation of the framework, including the procedures to call off projects under

the framework. A free copy of the LHC proforma is available upon request. The FAC-1 in standard published form can be purchased at a negotiated rate from ACA, by emailing office@acarchitects.co.uk and quoting discount code reference: LHCFAC2516102017.

THE PROCESS OF USING OUR FRAMEWORK






In association with:




Trusted procurement for
better buildings and homes

LHC

4th Floor | 2 Vine Street |
Uxbridge | UB8 1QE

01895 274 800 

info@lseprocure.org.uk 

@lhccprocurement 

linkedin.com/company/lhc 