

ENERGY EFFICIENCY MEASURES & ASSOCIATED WORKS

9TH NOVEMBER 2020 - 8TH NOVEMBER 2024



N8 FRAMEWORK GUIDE

ABOUT THIS FRAMEWORK

This LHC framework was developed to provide an efficient, value for money procurement route for local authorities, social landlords and other public sector bodies to source specialist suppliers who can provide a variety of carbon-reduction measures for domestic and public buildings and can carry out any associated repairs and retrofit work.

The tender was carried out in strict accordance with the EU Procurement Directive and UK public sector procurement rules.

Places on the framework were awarded to 16 different suppliers for the installation of 21 energy efficiency measures. This is split into two workstreams with three project value bands and across five regional Lots.

The framework will run for a maximum of four years. However, individual call-off projects can be completed beyond the four-year duration of the framework as long as a contract is in place prior to the framework expiry date.

The term of the framework is from **9th November 2020 to 8th November 2024**.

Consultancy and project management support is available through the Energy Efficiency Consultancy Services framework N8C.



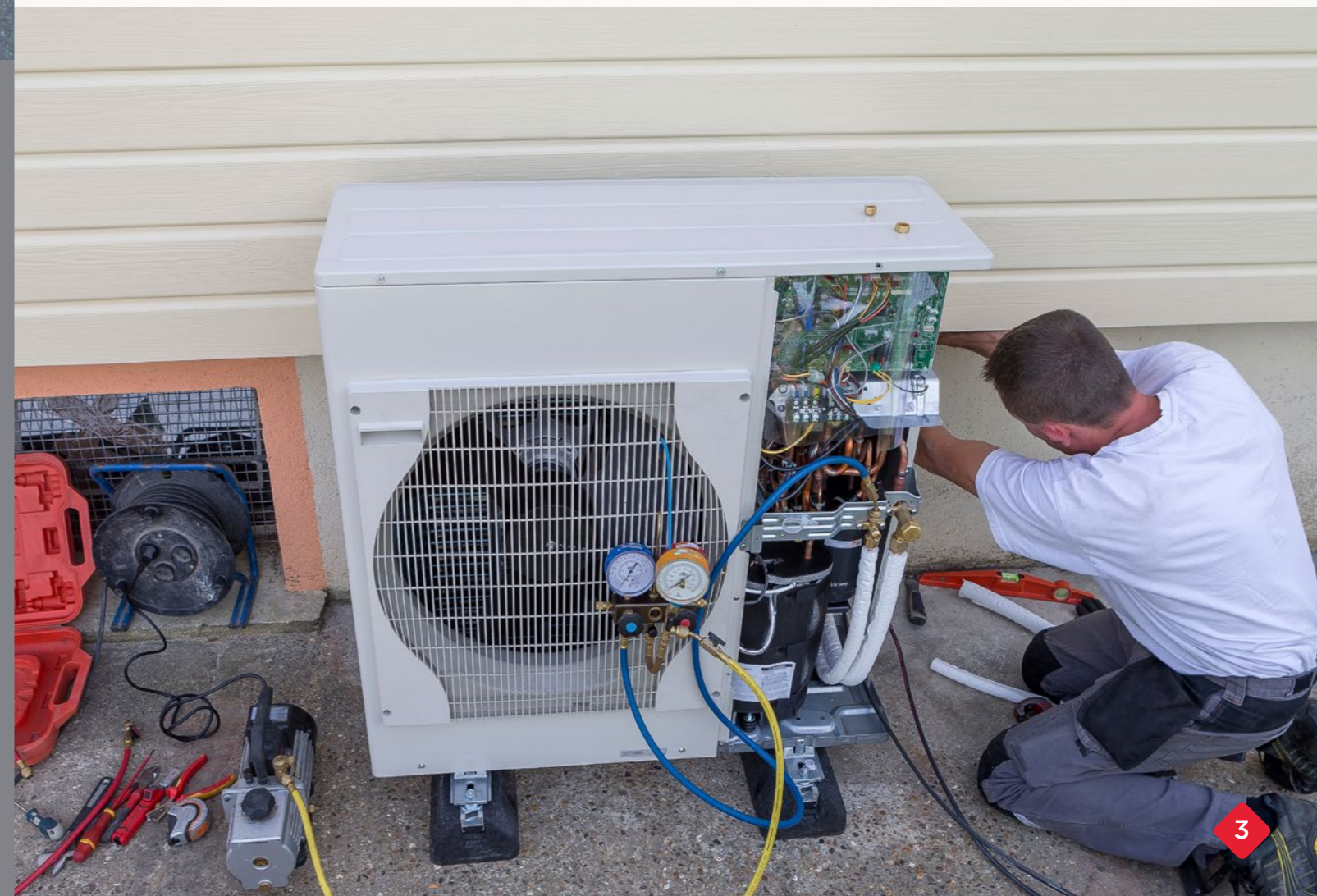
LHC procures frameworks, in accordance with The Public Contracts Regulations 2015, which can be used by local authorities, social landlords and other public sector bodies to procure works, products and services for the construction, refurbishment and maintenance of social housing, schools and public buildings.

Established in 1966, LHC are acknowledged as one of the most experienced and respected providers of procurement frameworks in the construction sector.

LHC
4th Floor | 2 Vine Street | Uxbridge | UB8 1QE

☎ 01895 274 800
✉ info@lseprocure.org.uk

✂ @lhcprocurement
🌐 [linkedin.com/company/lhc](https://www.linkedin.com/company/lhc)



The 21 energy efficiency measures offered through N8 are:

• External wall insulation	• Cavity wall insulation	• Internal wall insulation
• Insulation materials (Loft)	• Biomass boilers	• Floor insulation
• Air to water heat pumps	• Rainscreen and cladding	• Traditional boilers
• District heating interface units	• Combined heat & power (CHP) or combined cooling & heat & power (CCHP)	• Gas absorption heat pumps
• Solar thermal systems	• Lighting controls	• EV charging infrastructure
• Boiler optimisation technologies	• Building energy management systems	• Solar PV with battery storage
• Ground source heat pumps	• Commercial boilers	• Electric heaters

ABOUT THIS FRAMEWORK

Workstream 1 (WS1) - Individual Measures

Relates to the provision of 21 individual energy efficiency measures across three value bands:

£0 - £750,000

£500,000 - £1.5 million

Over £1.5 million

A total of 16 suppliers have been appointed onto workstream 1:



Workstream 2 (WS2) - Multiple Measures

The supplier on this workstream have proven that they can provide all 21 measures identified in workstream 1. This workstream is designed to accommodate large projects, with a variety of energy efficiency measures required.

Ameresco have been appointed onto workstream 2:



EVALUATION CRITERIA

A single stage open tender process was used.

Appointed companies are required to have in place the following minimum insurances:

- > Public/Third Party Liability Insurance - £5 million
- > Employers Liability Insurance - £5 million
- > Professional Indemnity Insurance - £5 million
- > Product Liability Insurance - £5 million

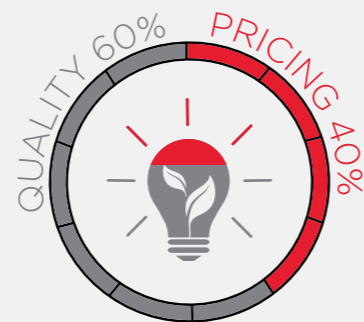
Financial due diligence - applicants were assessed on their turnover and checked via Credit Safe. The results of this check were assessed on a pass/fail basis.

Quality 60%

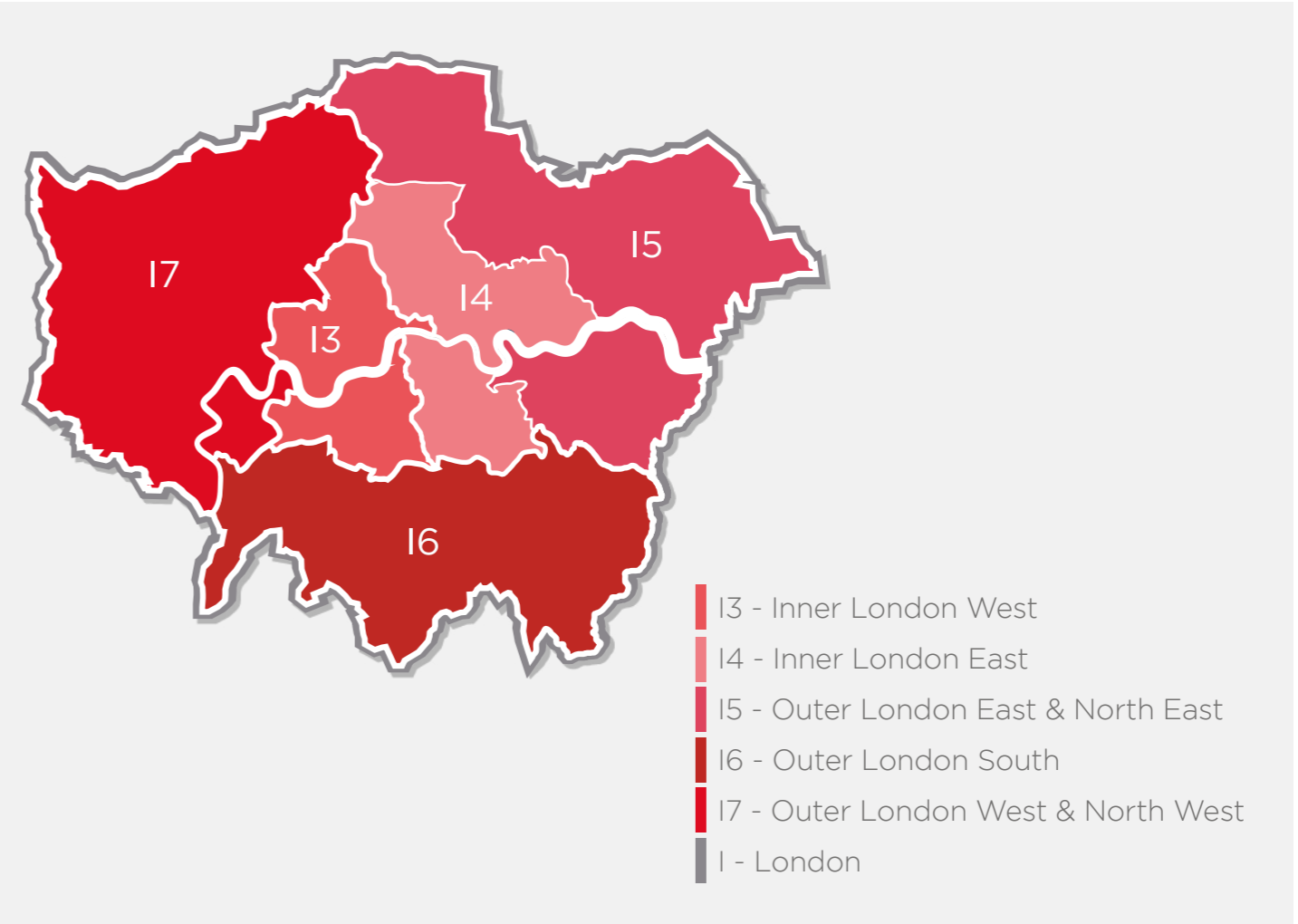
Measure specific question such as product recommendation, accreditation, warranties and product training	15%
Project resource	10%
Defects resolution	7%
Contract management	7%
Safe working	5%
Customer care	5%
CDM compliance	5%
Social value	6%

Price 40%

Profit, overhead & prelims	20%
NHF adjustment	10%
Scenario pricing and regional uplift	10%



APPOINTED COMPANIES REGIONAL AREAS



WS1 APPOINTED COMPANIES INNER LONDON WEST (13)

Suppliers (Listed Alphabetically)	
Air to Water Heat Pumps	Ameresco
Biomass Boilers	Ameresco
Boiler Optimisation Technologies	Ameresco
Building Energy Management Systems	K&T Heating, Ameresco
Cavity Wall Insulation	Ameresco, Aran Insulation, Breyer Group, E.On (Midlands), Low Carbon Exchange
Combined Cooling Heat and Power (CCHP); CHP (L)	Ameresco
Commercial Boilers	K&T Heating, Ameresco
District Heat Interface Unit	K&T Heating, Ameresco
Electric Heaters	K&T Heating, Low Carbon Exchange, Ameresco
EV Charging Infrastructure	Ameresco, Crystal Electronics, Swarco UK, Low Carbon Exchange
External Wall Insulation	E.On (Midlands), Aran Insulation, Breyer Group, Sustainable Building Services (UK), Lawtech, United Living (South), Ameresco, Low Carbon Exchange
Floor Insulation	Ameresco
Gas Absorption Heat Pumps	Ameresco, Kensa
Ground Source Heat Pumps	Ameresco, Kensa
Insulation	Ameresco, Aran Insulation, E.On (Midlands), Low Carbon Exchange
Internal Wall Insulation	Aran Insulation, Ameresco
Lighting Controls	Ameresco
Rainscreen and Cladding	AD Construction Group, Lawtech, Breyer Group, United Living (South), Ameresco
Solar PV with co-located battery	Ameresco, Custom Solar, Low Carbon Exchange
Solar Thermal Systems	Ameresco
Traditional Boilers	K&T Heating, British Gas Social Housing, Aran Insulation, Ameresco

WS1 APPOINTED COMPANIES INNER LONDON EAST (14)

Suppliers (Listed Alphabetically)	
Air to Water Heat Pumps	Ameresco
Biomass Boilers	Ameresco
Boiler Optimisation Technologies	Ameresco
Building Energy Management Systems	K&T Heating, Ameresco
Cavity Wall Insulation	Breyer Group, Aran Insulation, E.On (Midlands), Low Carbon Exchange, Ameresco
Combined Cooling Heat and Power (CCHP); CHP (L)	Ameresco
Commercial Boilers	K&T Heating, Ameresco
District Heat Interface Unit	K&T Heating, Ameresco
Electric Heaters	K&T Heating, Low Carbon Exchange, Ameresco
EV Charging Infrastructure	Ameresco, Crystal Electronics, Swarco UK, Low Carbon Exchange
External Wall Insulation	Ameresco, Aran Insulation, Sustainable Building Services (UK), Lawtech, Breyer Group, E.On (Midlands), United Living (South), Low Carbon Exchange
Floor Insulation	Ameresco
Gas Absorption Heat Pumps	Ameresco, Kensa
Ground Source Heat Pumps	Ameresco, Kensa
Insulation	Ameresco, Aran Insulation, E.On (Midlands), Low Carbon Exchange
Internal Wall Insulation	Aran Insulation, Ameresco
Lighting Controls	Ameresco
Rainscreen and Cladding	AD Construction Group, Lawtech, Breyer Group, Ameresco, United Living (South)
Solar PV with co-located battery	Custom Solar, Low Carbon Exchange, Ameresco
Solar Thermal Systems	Ameresco
Traditional Boilers	K&T Heating, British Gas Social Housing, Aran Insulation, Ameresco

WS1 APPOINTED COMPANIES

OUTER LONDON EAST & NORTH EAST (15)

Suppliers (Listed Alphabetically)	
Air to Water Heat Pumps	Ameresco
Biomass Boilers	Ameresco
Boiler Optimisation Technologies	Ameresco
Building Energy Management Systems	K&T Heating, Ameresco
Cavity Wall Insulation	Ameresco, Aran Insulation, Breyer Group, E.On (Midlands), Low Carbon Exchange
Combined Cooling Heat and Power (CCHP); CHP (L)	Ameresco
Commercial Boilers	K&T Heating, Ameresco
District Heat Interface Unit	K&T Heating, Ameresco
Electric Heaters	K&T Heating, Low Carbon Exchange, Ameresco
EV Charging Infrastructure	Ameresco, Crystal Electronics, Swarco UK, Low Carbon Exchange,
External Wall Insulation	E.On (Midlands), Aran Insulation, Breyer Group, Sustainable Building Services (UK), Lawtech, United Living (South), Ameresco, Low Carbon Exchange
Floor Insulation	Ameresco
Gas Absorption Heat Pumps	Ameresco, Kensa
Ground Source Heat Pumps	Ameresco, Kensa
Insulation	Ameresco, Aran Insulation, E.On (Midlands), Low Carbon Exchange
Internal Wall Insulation	Aran Insulation, Ameresco
Lighting Controls	Ameresco
Rainscreen and Cladding	AD Construction Group, Lawtech, Breyer Group, United Living (South), Ameresco
Solar PV with co-located battery	Ameresco, Custom Solar, Low Carbon Exchange
Solar Thermal Systems	Ameresco
Traditional Boilers	K&T Heating, British Gas Social Housing, Aran Insulation, Ameresco

WS1 APPOINTED COMPANIES

OUTER LONDON SOUTH (16)

Suppliers (Listed Alphabetically)	
Air to Water Heat Pumps	Ameresco
Biomass Boilers	Ameresco
Boiler Optimisation Technologies	Ameresco
Building Energy Management Systems	K&T Heating, Ameresco
Cavity Wall Insulation	Breyer Group, Aran Insulation, E.On (Midlands), Ameresco, Low Carbon Exchange
Combined Cooling Heat and Power (CCHP); CHP (L)	Ameresco
Commercial Boilers	K&T Heating, Ameresco
District Heat Interface Unit	K&T Heating, Ameresco
Electric Heaters	K&T Heating, Low Carbon Exchange, Ameresco
EV Charging Infrastructure	Ameresco, Crystal Electronics, Swarco UK, Low Carbon Exchange
External Wall Insulation	Ameresco, Aran Insulation, Sustainable Building Services (UK), Lawtech, Breyer Group, E.On (Midlands), United Living (South), Low Carbon Exchange
Floor Insulation	Ameresco
Gas Absorption Heat Pumps	Ameresco, Kensa
Ground Source Heat Pumps	Ameresco, Kensa
Insulation	Ameresco, Aran Insulation, E.On (Midlands), Low Carbon Exchange
Internal Wall Insulation	Aran Insulation, Ameresco
Lighting Controls	Ameresco
Rainscreen and Cladding	AD Construction Group, Lawtech, Breyer Group, United Living (South), Ameresco
Solar PV with co-located battery	Custom Solar, Low Carbon Exchange, Ameresco
Solar Thermal Systems	Ameresco
Traditional Boilers	K&T Heating, British Gas Social Housing, Aran Insulation, Ameresco

WS1 APPOINTED COMPANIES

OUTER LONDON WEST & NORTH WEST (17)

Suppliers (Listed Alphabetically)	
Air to Water Heat Pumps	Ameresco
Biomass Boilers	Ameresco
Boiler Optimisation Technologies	Ameresco
Building Energy Management Systems	K&T Heating, Ameresco
Cavity Wall Insulation	Ameresco, Aran Insulation, Breyer Group, E.On (Midlands), Low Carbon Exchange
Combined Cooling Heat and Power (CCHP); CHP (L)	Ameresco
Commercial Boilers	K&T Heating, Ameresco
District Heat Interface Unit	K&T Heating, Ameresco
Electric Heaters	K&T Heating, Low Carbon Exchange, Ameresco
EV Charging Infrastructure	Ameresco, Crystal Electronics, Swarco UK, Low Carbon Exchange
External Wall Insulation	Sustainable Building Services (UK), Lawtech, Breyer Group, E.On (Midlands), United Living (South), Synergize, Aran Insulation, Low Carbon Exchange, Ameresco
Floor Insulation	Ameresco
Gas Absorption Heat Pumps	Ameresco, Kensa
Ground Source Heat Pumps	Ameresco, Kensa
Insulation	Ameresco, Aran Insulation, E.On (Midlands), Low Carbon Exchange
Internal Wall Insulation	Aran Insulation, Ameresco
Lighting Controls	Ameresco
Rainscreen and Cladding	AD Construction Group, Lawtech, Breyer Group, United Living (South), Ameresco
Solar PV with co-located battery	Ameresco, Custom Solar, Low Carbon Exchange
Solar Thermal Systems	Ameresco
Traditional Boilers	K&T Heating, British Gas Social Housing, Aran Insulation, Ameresco

WS2 APPOINTED COMPANIES

LONDON (1)

Suppliers (Listed Alphabetically)	
Multiple Measures covering all 21 measures throughout the whole region of London	Ameresco

Project value bands

0 - £750,000

£500,000 - £1.5 million

Over £1.5 million

For more details on the suppliers covering each value band, please get in touch with the team.



AWARD OPTIONS

The Framework allows clients the option of:

Direct award without further competition, where all terms and conditions of the call-off project are within the terms and conditions of the framework

OR

Mini-competition, where terms and conditions of the call-off may vary or be modified from the framework or at the choice of the Client.

When calling off projects, clients can use any one of a range of standard forms of building contract including JCT/SBCC, NEC/NEC4, ACE, PPC, TPC, FAC1, or their own in-house agreement.

Eligibility

LHC is a not-for-profit organisation, governed by public law and a central purchasing body providing procurement services. Over 200 publicly funded organisations throughout England use LHC frameworks to procure works, goods and services to construct, refurbish and maintain social housing, schools and public buildings:

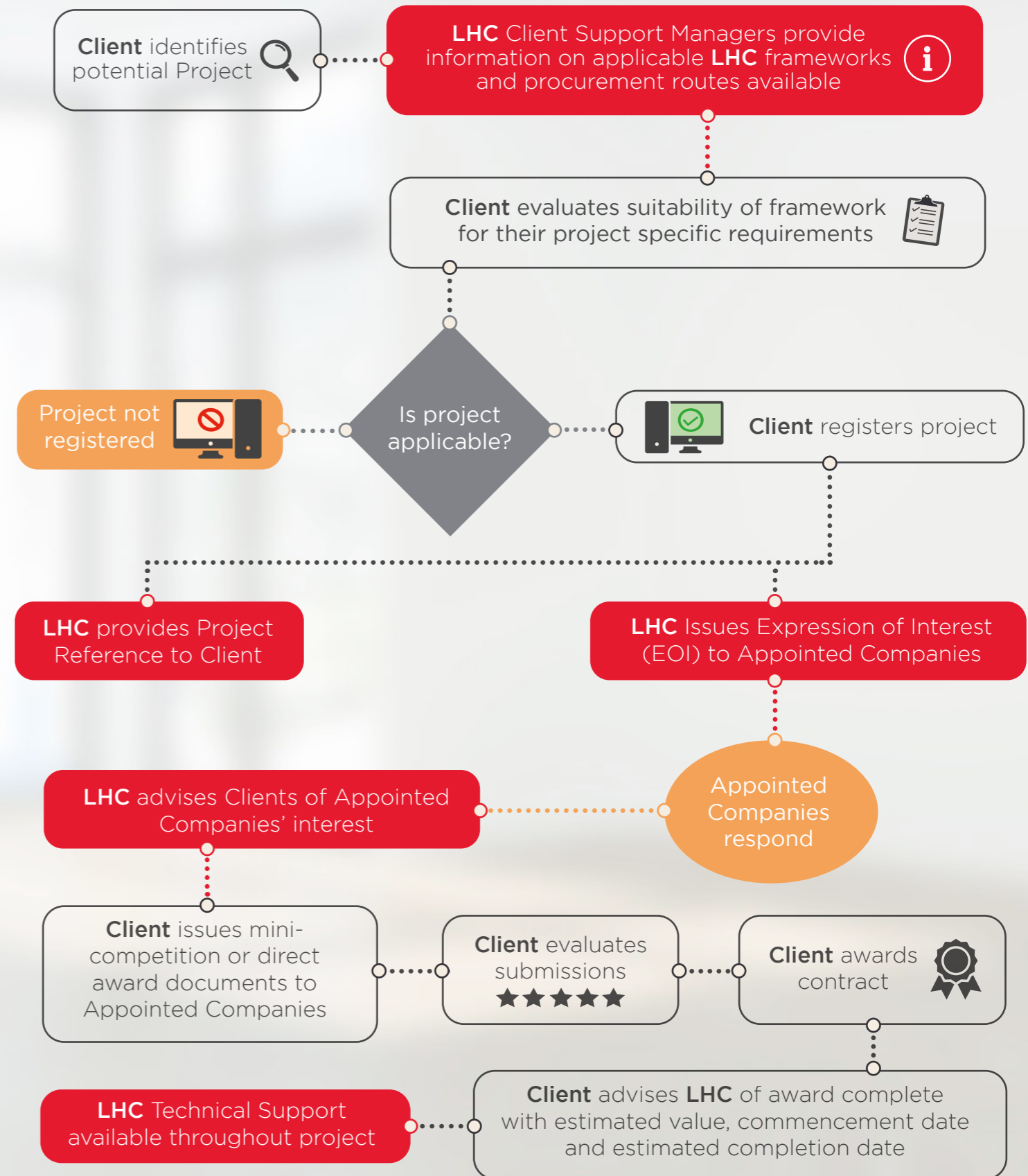
- > Local Authorities and any subsidiaries and joint-venture vehicles of those Local Authorities.
- > Registered Social Landlords (RSL), Tenant Management Organisations (TMOs) & Arm's Length Management Organisations (ALMOs)
- > Health Authorities, Councils, Boards and Trusts
- > Publicly Funded Schools
- > Universities and Further Education Establishments
- > Colleges
- > Police Forces
- > Fire and Rescue services
- > Registered Charities

Details of those contracting authorities identified are listed at: lse.lhcprocure.org.uk/who-we-work-with/

General Terms and Conditions


LHC uses the FAC-1 standard form of contract to manage our frameworks. The LHC pro forma, which should be read in conjunction with the FAC-1 in published form, details the terms and conditions that govern the operation of the framework, including the procedures to call off projects under the framework. A free copy of the LHC proforma is available upon request. The FAC-1 in standard published form can be purchased at a negotiated rate from ACA, by emailing office@acarchitects.co.uk and quoting discount code reference: LHCFAC2516102017.

THE PROCESS OF USING OUR FRAMEWORK



LHC

LONDON AND
SOUTH EAST
PROCUREMENT

 01895 274 800

 lse.lhcprocure.org.uk

 info@lseprocure.org.uk

 [@lhcprocurement](https://twitter.com/lhcprocurement)

 [linkedin.com/company/lhc](https://www.linkedin.com/company/lhc)

In association with:

LHC
PROCUREMENT GROUP