

Consultancy Services

Consultancy Services (CS1) (South East Region)

26TH APRIL 2023 - 25TH APRIL 2027

Multi-Disciplinary Consultancy Services (MDC1)

11TH JANUARY 2022 - 10TH JANUARY 2028

Combined Framework Guide



LHC procures frameworks and DPS's, in accordance with The Public Contracts Regulations 2015, which can be used by local authorities, social landlords and other public sector bodies to procure works, products and services for consultancy, compliance, refurbishment and modernisation, energy efficiency and development projects.

Established in 1966, LHC are acknowledged as one of the most experienced and respected providers of procurement frameworks in the construction sector.

LHC

3rd Floor | 2 Vine Street | Uxbridge | UB8 1QE

☎ 01895 274 800
✉ info@lseprocure.org.uk

✂ @lhccprocurement
in [linkedin.com/company/lhc](https://www.linkedin.com/company/lhc)

WHAT WILL YOU FIND IN THIS COMBINED FRAMEWORK GUIDE?

This combined framework guide will provide an end-to-end overview of LHC's entire construction-led consultancy frameworks portfolio. Each framework has been developed to provide an efficient, value for money procurement route for local authorities; registered social landlords; councils, boards, and trusts, and other public sector bodies seeking a comprehensive range of high-quality consultancy services across multiple disciplines.

Services available include:

- Architectural design
- Mechanical, electrical, and plumbing (MEP)
- Asset management consultancy
- Multi-disciplinary consultancy

Each distinct framework brings together trusted suppliers recognised for their specialist expertise and designed to ensure our clients have access to services enabling them to meet the rapidly evolving needs of local communities.

LHC's construction consultancy framework portfolio includes:



Consultancy Services (CS1)

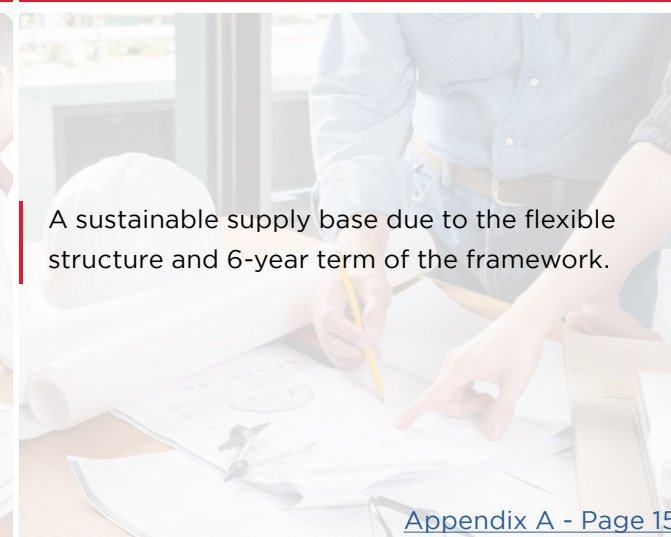


Multi-Disciplinary Consultancy Services (MDC1)



Designed to increase public sector access to specialist expertise and support regional and local economic growth.

[Page 4](#)



A sustainable supply base due to the flexible structure and 6-year term of the framework.

[Appendix A - Page 15](#)

WHY HAS THIS FRAMEWORK BEEN DEVELOPED?

CN 2022/S 000-022121, CAN 2023/S 000-012065

This framework has been developed to provide an efficient, value for money procurement route for local authorities; registered social landlords; councils, trusts, and other public sector bodies seeking a comprehensive range of high-quality consultancy services across multiple disciplines.

Key benefits - at a glance:

- ✓ Higher service standards through access to innovative companies of varying sizes.
- ✓ Greater customer service by focussing on collaboration and social value.
- ✓ A diverse supply base that reflects the London communities we serve.
- ✓ Increase public sector access to SME expertise and support regional and local economic growth.

About this framework

This Consultancy Services Framework is the first framework of its kind to have been provided by LHC Procurement Group to the London region and is a direct result of LHC's continued focus on bringing meaningful innovation to procurement framework design to meet the challenges faced by local authorities, registered social landlords, councils, boards, trusts, and other public sector bodies.

By combining our procurement and design expertise, and our track record in creating award winning frameworks aimed at ensuring greater diversity and inclusion, social value, and equal opportunities have culminated in the creation of our latest consultancy framework CS1.



“ In addition to large and medium-sized consultancies, of the 117 appointed companies across 21 lots are comprised of 80% SMEs, and between 35% and 60% in each lot are micro and small companies. Providing the public sector access to a more diverse range of SME and micro firms to support regional and community growth initiatives. ”

Dean Fazackerley
Head of Technical Procurement

The tender was carried out in strict accordance with the EU Procurement Directive and UK public sector procurement rules. Places on the framework were awarded to 30 different suppliers in three workstreams. The companies appointed to the framework are registered, qualified organisations with a track record in supporting public sector.

The term of the framework is from **26th April 2023 to 25th April 2027**. However, individual call off projects can be completed beyond the four-year duration of the framework as long as a contract is in place prior to the framework expiry date.

ABOUT THIS FRAMEWORK

CONTINUED

Our vision for the framework

The CS1 framework has been created to help organisations build capacity, strength and provide a comprehensive range of high-quality consultancy services across multiple disciplines to the public sector.

Following client feedback on the restrictive nature of value bands, combined with the vision to remove barriers for SMEs, this framework has been designed to be open and accessible.

The transparency and ethos of the framework encourages micro-SMEs to collaborate or partner with larger companies to bid, which in turn encourages growth through the four-year lifetime of the framework, making it more sustainable in the long term.

Our Client Support Managers and Technical Support Managers will be on hand to provide guidance around how to short-list applicants if a smaller list of bidders is required.

Aimed at projects of all sizes to meet client need and truly reflect the current market, it will also help organisations to offer something more through the evaluation of bidders' focus on EDI and customer service.



LHC Lifetime Values

In addition to providing our clients with competitively tendered Framework Agreements for building works, goods, and services LHC is committed to delivering tangible social value and community benefits that meet local and regional needs. LHC work with our clients and appointed companies to ensure that wherever possible projects delivered using our Frameworks leave a social legacy.

LHC has aligned its activities to create the LHC Lifetime Values, which uses the four key value categories as identified in the value toolkit by the Construction Innovation Hub (CIH). CIH has been established by Government to progress innovation in the construction sector.

During the life of the Framework LHC will work with clients and appointed companies to promote, identify, implement, and monitor the impact of these value categories, which could be supported by social value and community benefit initiatives alongside the delivery of the works or service contracts in meeting local/regional needs.

APPOINTED COMPANIES

ACROSS THE SOUTH EAST OF ENGLAND

















APPOINTED COMPANIES

CONTINUED

Areas across Midlands, London and South East

- J1 – Berkshire, Buckinghamshire and Oxfordshire
- J2 – Surrey East & West Sussex
- J3 – Hampshire & Isle of Wight
- J4 – Kent
- H2 – Bedfordshire & Hertfordshire
- H3 – Essex
- F – East Midlands
- G – West Midlands
- H – East of England











WORKSTREAM 2 - MECHANICAL, ELECTRICAL AND PLUMBING (MEP)
CONSULTANCY

The services for each lot within this MEP workstream covers building services elements such as mechanical, electrical and plumbing systems (All Appointed Companies are listed alphabetically).

Mechanical, electrical and plumbing		
Bedfordshire & Hertfordshire - H2	Essex - H3	Berkshire, Buckinghamshire & Oxfordshire - J1
Bailey Partnership (Consultants)	Bailey Partnership (Consultants)	Bailey Partnership (Consultants)
Butler & Young Services	Butler & Young Services	Butler & Young Services
Clear Safety Services	Clear Safety Services	Clear Safety Services
Couch Perry & Wilkes	Couch Perry & Wilkes	Couch Perry & Wilkes
David Miles & Partners	David Miles & Partners	David Miles & Partners
McCann & Partner	McCann & Partner	McCann & Partner
Method Consulting	Method Consulting	Method Consulting
Ridge and Partners	Ridge and Partners	Ridge and Partners
Wallace Whittle	Wallace Whittle	Wallace Whittle
Watts Group	Watts Group	Watts Group
Surrey East & West Sussex - J2	Hampshire & Isle of Wight - J3	Kent - J4
Bailey Partnership (Consultants)	Bailey Partnership (Consultants)	Bailey Partnership (Consultants)
Butler & Young Services	Butler & Young Services	Butler & Young Services
Clear Safety Services	Clear Safety Services	Clear Safety Services
Couch Perry & Wilkes	Couch Perry & Wilkes	Couch Perry & Wilkes
David Miles & Partners	David Miles & Partners	David Miles & Partners
McCann & Partner	McCann & Partner	McCann & Partner
Method Consulting	Method Consulting	Method Consulting
Ridge and Partners	Ridge and Partners	Ridge and Partners
Wallace Whittle	Wallace Whittle	Wallace Whittle
Watts Group	Watts Group	Watts Group
East Midlands - F	West Midlands - G	East of England - H
Bailey Partnership (Consultants)	Bailey Partnership (Consultants)	Bailey Partnership (Consultants)
Butler & Young Services	Butler & Young Services	Butler & Young Services
Clear Safety Services	Clear Safety Services	Clear Safety Services
Couch Perry & Wilkes	Couch Perry & Wilkes	Couch Perry & Wilkes
David Miles & Partners	David Miles & Partners	David Miles & Partners
McCann & Partners	McCann & Partners	Method Consulting
Method Consulting	Method Consulting	Ridge and Partners
Ridge and Partners	Ridge and Partners	Wallace Whittle
Wallace Whittle	Wallace Whittle	Watts Group
Watts Group	Watts Group	--

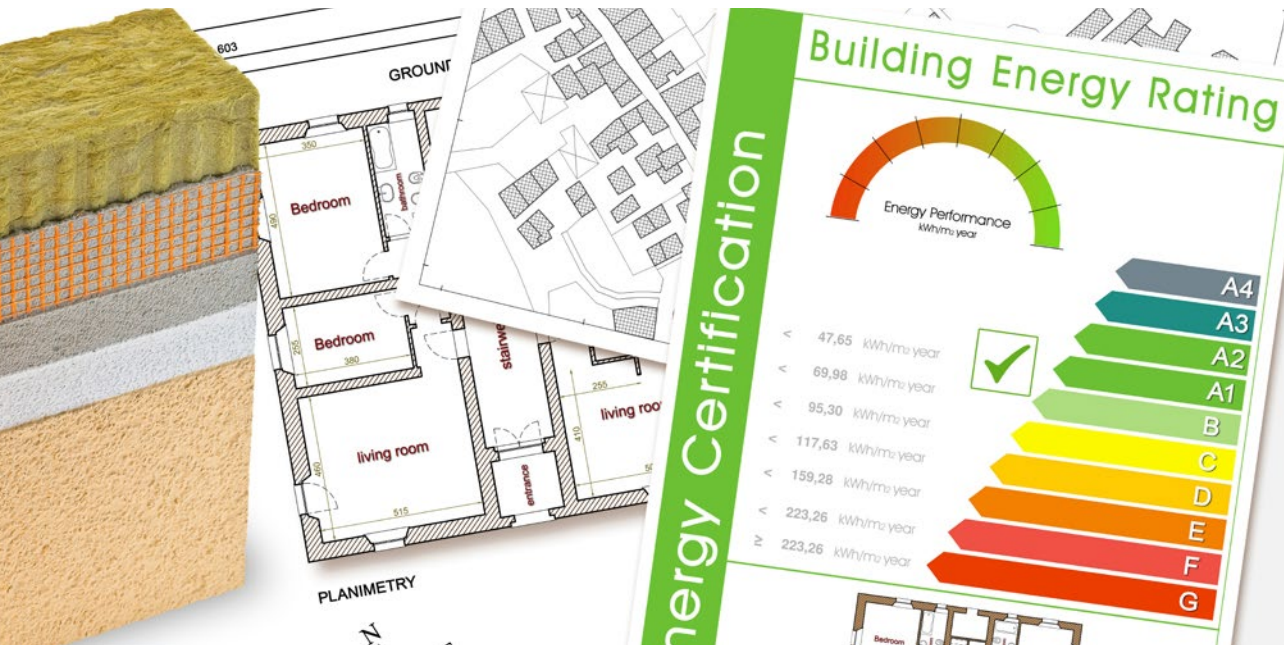
Building services engineer (HVAC)		
Bedfordshire & Hertfordshire - H2	Essex - H3	Berkshire, Buckinghamshire & Oxfordshire - J1
Bailey Partnership (Consultants)	Bailey Partnership (Consultants)	Bailey Partnership (Consultants)
Butler & Young Services	Butler & Young Services	Butler & Young Services
David Miles & Partners	David Miles & Partners	David Miles & Partners
McCann & Partners	McCann & Partners	McCann & Partners
Method Consulting	Method Consulting	Method Consulting
Ridge and Partners	Ridge and Partners	Ridge and Partners
Wallace Whittle	Wallace Whittle	Wallace Whittle
Watts Group	Watts Group	Watts Group
Surrey East & West Sussex - J2	Hampshire & Isle of Wight - J3	Kent - J4
Bailey Partnership (Consultants)	Bailey Partnership (Consultants)	Bailey Partnership (Consultants)
Butler & Young Services	Butler & Young Services	Butler & Young Services
David Miles & Partners	David Miles & Partners	David Miles & Partners
McCann & Partners	McCann & Partners	McCann & Partners
Method Consulting	Method Consulting	Method Consulting
Ridge and Partners	Ridge and Partners	Ridge and Partners
Wallace Whittle	Wallace Whittle	Wallace Whittle
Watts Group	Watts Group	Watts Group
East Midlands - F	West Midlands - G	East of England - H
Bailey Partnership (Consultants)	Bailey Partnership (Consultants)	Bailey Partnership (Consultants)
Butler & Young Services	Butler & Young Services	Butler & Young Services
David Miles & Partners	David Miles & Partners	David Miles & Partners
McCann & Partners	McCann & Partners	Method Consulting
Method Consulting	Method Consulting	Ridge and Partners
Ridge and Partners	Ridge and Partners	Wallace Whittle
Wallace Whittle	Wallace Whittle	Watts Group
Watts Group	Watts Group	--



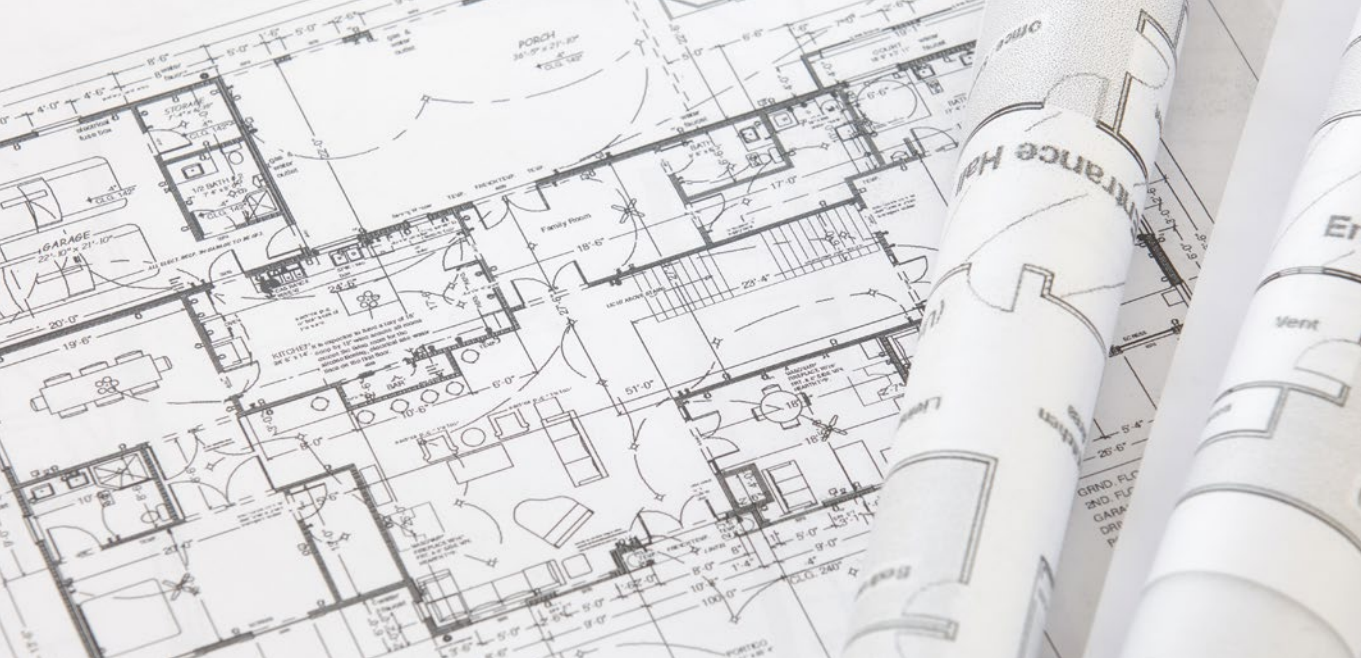
WORKSTREAM 3 – ASSET MANAGEMENT CONSULTANCY

The services for each lot within this workstream are designed to provide clients with asset management services (All Appointed Companies are listed alphabetically).

EPC assessments		
Bedfordshire & Hertfordshire - H2	Essex - H3	Berkshire, Buckinghamshire & Oxfordshire - J1
Energy & Compliance Technology	Energy & Compliance Technology	Arthian
integrated Environmental Solutions	integrated Environmental Solutions	Energy & Compliance Technology
Pellings	Pellings	integrated Environmental Solutions
R J Barwick	R J Barwick	Pellings
Rand Associates Consultancy Services	Rand Associates Consultancy Services	Rand Associates Consultancy Services
--	--	R J Barwick
Surrey East & West Sussex - J2	Hampshire & Isle of Wight - J3	Kent - J4
Arthian	Arthian	Energy & Compliance Technology
Energy & Compliance Technology	Energy & Compliance Technology	integrated Environmental Solutions
integrated Environmental Solutions	integrated Environmental Solutions	Pellings
Pellings	Pellings	Rand Associates Consultancy Services
Rand Associates Consultancy Services	Rand Associates Consultancy Services	R J Barwick
R J Barwick	R J Barwick	--
East Midlands - F	West Midlands - G	East of England - H
Energy & Compliance Technology	Energy & Compliance Technology	Energy & Compliance Technology
integrated Environmental Solutions	integrated Environmental Solutions	integrated Environmental Solutions
Pellings	Pellings	R J Barwick
Rand Associates Consultancy Services	R J Barwick	Rand Associates Consultancy Services
TWC Consulting [Zero Carbon Consultants]	Rand Associates Consultancy Services	TWC Consulting [Zero Carbon Consultants]
--	TWC Consulting [Zero Carbon Consultants]	--



Retrofit consultancy (PAS2035/PAS2038)		
Bedfordshire & Hertfordshire - H2	Essex - H3	Berkshire, Buckinghamshire & Oxfordshire - J1
ECD Architects	ECD Architects	ECD Architects
Karakusevic Carson Architects	Karakusevic Carson Architects	Karakusevic Carson Architects
LivGreen	LivGreen	LivGreen
Pellings	Pellings	Pellings
R J Barwick	R J Barwick	R J Barwick
Rand Associates Consultancy Services	Rand Associates Consultancy Services	Rand Associates Consultancy Services
Rider Levett Bucknall UK	Rider Levett Bucknall UK	Rider Levett Bucknall UK
Taylor Lewis	Taylor Lewis	Taylor Lewis
Surrey East & West Sussex - J2	Hampshire & Isle of Wight - J3	Kent - J4
ECD Architects	ECD Architects	ECD Architects
Karakusevic Carson Architects	Karakusevic Carson Architects	Karakusevic Carson Architects
LivGreen	LivGreen	LivGreen
Pellings	Pellings	Pellings
R J Barwick	R J Barwick	R J Barwick
Rand Associates Consultancy Services	Rand Associates Consultancy Services	Rand Associates Consultancy Services
Rider Levett Bucknall UK	Rider Levett Bucknall UK	Rider Levett Bucknall UK
Taylor Lewis	Taylor Lewis	Taylor Lewis
East Midlands - F	West Midlands - G	East of England - H
ECD Architects	ECD Architects	ECD Architects
LivGreen	LivGreen	LivGreen
Pellings	Pellings	Rand Associates Consultancy Services
Rand Associates Consultancy Services	Rand Associates Consultancy Services	Rider Levett Bucknall UK
Rider Levett Bucknall UK	Rider Levett Bucknall UK	Taylor Lewis
R J Barwick	R J Barwick	TWC Consulting [Zero Carbon Consultants]
Taylor Lewis	Taylor Lewis	--
TWC Consulting [Zero Carbon Consultants]	TWC Consulting [Zero Carbon Consultants]	--



WORKSTREAM

OPTIONS CONTINUED

Digital co-ordinator		
Bedfordshire & Hertfordshire - H2	Essex - H3	Berkshire, Buckinghamshire & Oxfordshire - J1
BIMBox Associates	BIMBox Associates	BIMBox Associates
ECD Architects	ECD Architects	ECD Architects
Holmes Miller	Holmes Miller	Holmes Miller
R J Barwick	R J Barwick	R J Barwick
Rider Levett Bucknall UK	Rider Levett Bucknall UK	Rider Levett Bucknall UK
Ridge and Partners	Ridge and Partners	Ridge and Partners
Ryder Architecture	Ryder Architecture	Ryder Architecture
Surrey East & West Sussex - J2	Hampshire & Isle of Wight - J3	Kent - J4
BIMBox Associates	BIMBox Associates	BIMBox Associates
ECD Architects	ECD Architects	ECD Architects
Holmes Miller	Holmes Miller	Holmes Miller
R J Barwick	R J Barwick	R J Barwick
Rider Levett Bucknall UK	Rider Levett Bucknall UK	Rider Levett Bucknall UK
Ridge and Partners	Ridge and Partners	Ridge and Partners
Ryder Architecture	Ryder Architecture	Ryder Architecture
East Midlands - F	West Midlands - G	East of England - H
BIMBox Associates	BIMBox Associates	BIMBox Associates
ECD Architects	ECD Architects	ECD Architects
Holmes Miller	Holmes Miller	Holmes Miller
R J Barwick	R J Barwick	Rider Levett Bucknall UK
Rider Levett Bucknall UK	Rider Levett Bucknall UK	Ridge and Partners
Ridge and Partners	Ridge and Partners	Ryder Architecture
Ryder Architecture	Ryder Architecture	-



WORKSTREAM

OPTIONS CONTINUED

WORKSTREAM 4 - HEALTH AND SAFETY CONSULTANCY

The services for each lot within this workstream covers aspects of health and safety consultancy (All Appointed Companies are listed alphabetically).

Health and safety advisor/consultant		
Bedfordshire & Hertfordshire - H2	Essex - H3	Berkshire, Buckinghamshire & Oxfordshire - J1
Atkins Réalis	Atkins Réalis	Atkins Réalis
Clear Safety Services	Clear Safety Services	Clear Safety Services
Derisk (UK)	Derisk (UK)	Derisk (UK)
Pellings	Pellings	Pellings
Rider Levett Bucknall UK	Rider Levett Bucknall UK	Pembrokeshire Safety Services
Thomson Gray	Thomson Gray	Positive Safety Solutions
--	--	Rider Levett Bucknall UK
--	--	Thomson Gray
Surrey East & West Sussex - J2	Hampshire & Isle of Wight - J3	Kent - J4
Atkins Réalis	Atkins Réalis	Atkins Réalis
Clear Safety Services	Clear Safety Services	Clear Safety Services
Derisk (UK)	Derisk (UK)	Derisk (UK)
Pellings	Pellings	Pellings
Rider Levett Bucknall UK	Rider Levett Bucknall UK	Rider Levett Bucknall UK
East Midlands - F	West Midlands - G	East of England - H
Atkins Réalis	Atkins Réalis	Atkins Réalis
Clear Safety Services	Clear Safety Services	Clear Safety Services
Pellings	Pellings	Derisk (UK)
Rider Levett Bucknall UK	Positive Safety Solutions	Rider Levett Bucknall UK
Thomson Gray	Rider Levett Bucknall UK	--
--	Thomson Gray	--



EVALUATION
CRITERIA

The process involved a single stage open tendering procedure as set out within the Public Contracts Regulations 2015.

The following qualification criteria were used to assess the suitability of appointed companies.

Financial Stability Assessment

Appointed Companies were assessed on a range of financial information including liquidity and profitability and checked via Creditsafe. The results of this check were assessed on a pass/fail basis.

Minimum Insurance Cover

Throughout the duration of the framework Appointed Companies are required to have the minimum levels of insurance to be considered as set out in the table below:

Insurance	Value
Employers (Compulsory) Liability Insurance	£5,000,000
Public Liability Insurance	£5,000,000
Professional Indemnity Insurance	£2,000,000

Accreditations and Certifications

In order to be considered eligible for this Framework, Appointed Companies were required to evidence that they held both the applicable qualifications and accreditations for each Lot/ Workstream they were applying for.

Workstream 2 – Mechanical, Electrical and Plumbing (MEP) Consultancy		
Lot	M&E	M&E Qualifications (Mandatory)
2a	Mechanical, Electrical & Plumbing	Membership of a suitable and recognised professional body such as the Institute of Mechanical Engineers (IMechE), Electrical Contractors Association (ECA), Institute of Engineering and Technology (IET) or equivalent with experience is a requirement of this lot.
2b	Building Services Engineer (HVAC)	Membership of a suitable and recognised professional body such as the Chartered Institute of Building Services Engineers (CIBSE) or equivalent with experience is a requirement of this lot.

EVALUATION
CRITERIA CONTINUED



Workstream 3 – Asset Management Consultancy		
Lot	Asset Management	Asset Management Qualifications (Mandatory)
3a	EPC Assessments	The requirements for this lot are that bidders are Domestic Energy Assessor (DEA) certified for domestic and Non-Domestic Energy Assessor (NDEA) certified for non-domestic. Registration with government departments according to current legislation such as the Department for Levelling up, Housing and Communities (DLUHC) is a requirement for this lot.
3b	Retrofit Consultancy (PAS 2035 and 2038)	The requirements for this lot are that bidders are certified and hold a current valid PAS related qualification such as a PAS Coordinator to cover both domestic and non-domestic installations and assume responsibility for the management of all roles.
3c	Digital Coordinator	The requirements for this lot are that bidders have validated BIM experience and a background in architecture, structural or mechanical, electrical systems etc. Qualifications from an industry recognised source such as via The Institution of Structural Engineers (IstructE), Chartered Institute of Building (CIOB), British Standards institute (BSI) etc are required.

Workstream 4 – Health and Safety Consultancy		
Lot	Professional	Health & Safety Qualifications (Mandatory)
4	Health & Safety Advisor/Consultant	The requirements for this lot are that bidders are competent and experienced and hold a suitable qualification such as the National Examinations Board in Occupational Safety and Health (NEBOSH), or Institute of Occupational Safety and Health (IOSH) at a suitable level.

Compliance with Equality Act 2010
Applicants were required to evidence through several confirmatory statements that they are compliant with the Equality Act 2010 and have robust measures in place to promote equality and diversity within their organisation.

Quality Weighting 70%

General Quality Questions 40%

Gold Standard

Questions with regard to raising awareness of the standard, obtaining reliable information and prioritising safety, net zero and compliance.

Framework Management

Questions focussed on communication and collaboration, customer service and business continuity.

Social Value

Focused on improving the environment and local initiatives.

Professional Capability Questions 30%

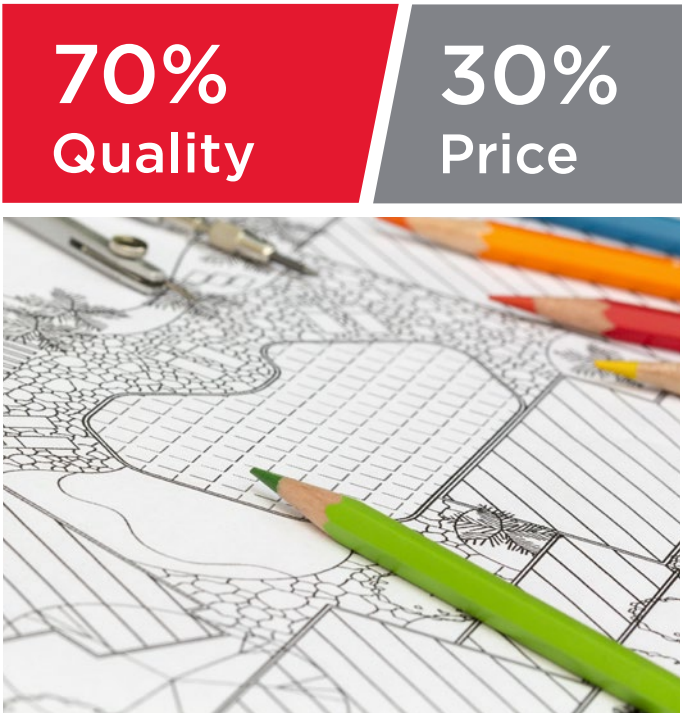
Certification/Accreditation

Discipline – Technical Capability

Price Weighting 30%

The pricing element of the evaluation process accounted for 30% of the overall score.

The breakdown of the pricing evaluation for each lot varies, however, the price weighting for every lot is 30%.



Why has this framework been developed?
This framework has been developed to provide an efficient, value for money procurement route for local authorities; registered social landlords; councils, boards, and trusts, and other public sector bodies seeking a comprehensive range of high-quality consultancy services across multiple disciplines.

Suitable for public sector refurbishment and new build projects of all sizes, it will enable organisations to access high quality pre-approved suppliers of all sizes who can deliver projects across a range of public buildings including:

- > Publicly funded schools, universities, and colleges
- > NHS healthcare buildings
- > Fire, ambulance, and police stations
- > Other public buildings and associated works
- > Residential properties (when part of a mixed-use development)

- > Student accommodation
- > Commercial to residential conversions
- > Community buildings
- > Public offices

Key benefits - at a glance:

- ✓ Higher service standards through access to innovative companies of varying sizes, who are experts in collaboration
- ✓ Greater customer service by focussing on collaboration and social value
- ✓ A diverse supply base that reflects the London & SE communities we serve
- ✓ A sustainable supply base due to the flexible structure and 6 year term of the framework

About this framework - CN 2021/S 000-003775, CAN 2022/S 000-000393

The Multi-Disciplinary Consultancy Services Framework is the first framework of its kind to have been provided by LHC to the London and South East region.

The tender was carried out in strict accordance with the EU Procurement Directive and UK public sector procurement rules. Places on the framework were awarded to 97 different suppliers in 12 workstreams. The companies appointed to the framework are registered, qualified organisations with a track record in public sector.

The term of the framework is from **11th January 2022 – 10th January 2028**. However, individual call off projects can be completed beyond the six-year duration of the framework as long as a contract is in place prior to the framework expiry date.

ABOUT THIS FRAMEWORK

OUR VISION



The MDC1 framework has been created to help organisations build capacity strength and provide a comprehensive range of high-quality consultancy services across multiple disciplines to the public sector.

Following client feedback on the restrictive nature of value bands, combined with the vision to remove barriers for SMEs, this framework has been designed to be open and transparent.

Value bands have been removed which means full visibility of work to any company within a discipline, and the ability to apply for any call-off. The transparency and ethos of the framework encourages micro-SMEs to collaborate or partner with larger companies to bid, which in turn encourages growth through the six year life of the framework, making it more sustainable in the long term.

Our Client Support Managers and Technical Support Managers will be on hand to provide guidance around how to short-list applicants if a smaller list of bidders is required.

Aimed at projects of all sizes to meet client need and truly reflect the current market, it will also help organisations to offer something more through the evaluation of bidders' focus on EDI and customer service.



“ Our vision is to provide the most realistic and effective solutions in public sector procurement whilst driving equal opportunity, reducing barriers to entry for smaller businesses, and appointing companies with diverse leadership and workforces that reflect the regions and communities that the framework will serve. ”

Jennifer Castle
Director of London and South East

WORKSTREAM

OPTIONS

We have developed 12 workstreams reflecting 11 individual disciplines alongside one multi-discipline workstream to cater for the different types of consultancy services available across the public sector. The workstreams are as follows:

Workstream 1: Architects (excluding London)	Workstream 2: Building Services Engineers	Workstream 3: Building Surveyors
Workstream 4: Clerk of Works	Workstream 5: Quantity Surveyors	Workstream 6: Employers Agents
Workstream 7: Planning Consultants	Workstream 8: Principal Designers	Workstream 9: Project Managers
Workstream 10: Structural Engineers	Workstream 11: Civil Engineers	Workstream 12: Multi-Discipline Services (covers all workstreams)

Regional areas covered:

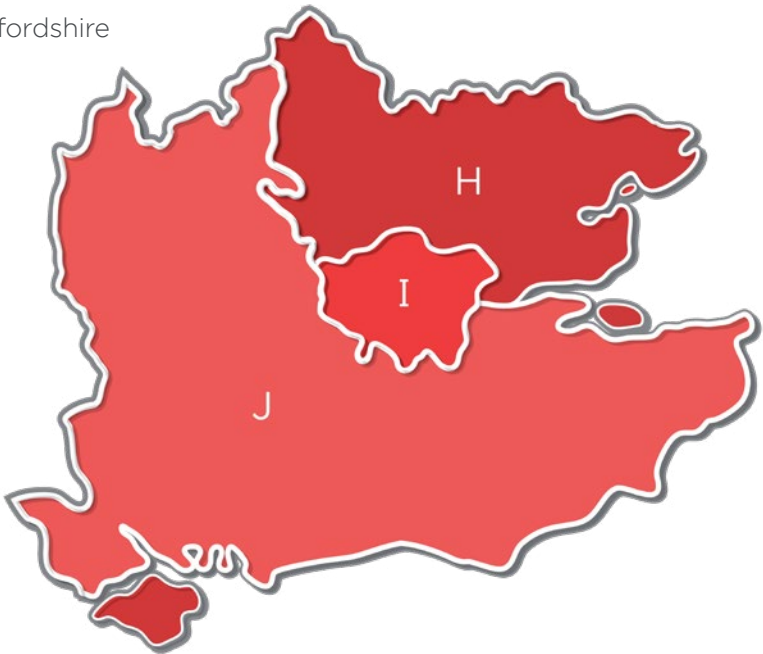
I - London

J - South East England

Berkshire, Buckinghamshire and Oxfordshire
Surrey East and West Sussex
Hampshire, Isle of Wight and Kent

H - East of England

Bedfordshire & Hertfordshire
Essex



APPOINTED COMPANIES

ACROSS LONDON AND THE SOUTH EAST OF ENGLAND

The following 114 companies have been appointed to MDC1 after successfully completing the two-stage application and tendering process:

Workstream 1 - Architects (excluding London)		
Micro-Enterprise	Small Enterprise	Medium+ Enterprise
Architecture00	Austin-Smith:Lord	Baily Garner
Autor	DSDHA	BPTW
Daykin Marshall Studio	GSSArchitecture	Jestico + Whiles + Associates
Hayhurst and Co	RCKa	Karakusevic Carson Architects
KAEBCA	Rock Townsend	Levitt Bernstein Associates
TOCA	Waugh Thistleton Architects	LSI Architects (Design)
Workstream 2 - Building Services Engineers		
Small Enterprise		Medium+ Enterprise
Butler & Young Associates		Couch Perry Wilkes
Malachy Walsh & Partners		Clancy Consulting
Pinnacle ESP		Buro Happold
--		BDP
--		Desco (Design & Consultancy)
--		Stantec UK
Workstream 3 - Building Surveyors		
Micro-Enterprise	Small Enterprise	Medium+ Enterprise
Thomas & Thomas	Arcus Consulting	Baily Garner
--	Blakeney Leigh	Currie & Brown UK
--	Daniel Connal	Gleeds Management Services
--	Richard Jackson	Hunters
--	Silver DCC	Potter Raper
--	Welling Partnership Property and Construction Consultants	Watts Group
Workstream 4 - Clerk of Works		
Micro-Enterprise	Small Enterprise	Medium+ Enterprise
BPP Construction Consultants	Betteridge & Milsom	Airey Miller
--	Hickton Consultants	Baily Garner
--	RG+P	Currie & Brown UK
--	Silver DCC	John Rowan and Partners
--	--	Potter Raper
--	--	Rund Partnership
*LISTED ALPHABETICALLY		

APPOINTED COMPANIES

CONTINUED

Workstream 5 - Quantity Surveyors		
Micro-Enterprise	Small Enterprise	Medium+ Enterprise
Costplan Services (South East)	Academy Consulting Solutions	Atkins Réalis
DMR Surveyors	Daniel Connal	John Rowan and Partners
JPN Projects	Fusion Project Management	Potter Raper
Marstan BDB	GSSArchitecture	Stace
Quaye Services	Keegans	Summers Inman Construction and Property Consultants
--	Playle & Partners	WT Partnership
Workstream 6 - Employers Agents		
Micro-Enterprise	Small Enterprise	Medium+ Enterprise
BPP Construction Consultants	Academy Consulting Solutions	Baily Garner
Costplan Services (South East)	Arcus Consulting	Faithorn Farrell Timms
JPN Projects	Keegans	Potter Raper
Marcel Hendricks & Partners	Playle & Partners	Rund Partnership
Marstan BDB	Silver DCC	Watts Group
TOCA	Welling Partnership Property and Construction Consultants	WT Partnership
Workstream 7 - Planning Consultants		
Micro-Enterprise		Medium+ Enterprise
TOCA and NTA Planning		HKS Architects
--		Montagu Evans
--		Quod
--		Stantec UK
--		Turley
Workstream 8 - Principal Designers		
Micro-Enterprise	Small Enterprise	Medium+ Enterprise
Pierce Hill Project Services	Arcus Consulting	Airey Miller
Safety Advisors	Playle & Partners	Faithorn Farrell Timms
--	RISE Management Consulting	John Rowan and Partners
--	Silver DCC	Martin Arnold
--	--	Watts Group
--	--	WT Partnership

*LISTED ALPHABETICALLY

APPOINTED COMPANIES

ACROSS LONDON AND THE SOUTH EAST OF ENGLAND

Workstream 9 - Project Managers		
Micro-Enterprise	Small Enterprise	Medium+ Enterprise
Marcel Hendricks & Partners	Academy Consulting Solutions	AHR Building Consultancy
One Consulting Group	Fusion Project Management	Atkins Réalis
TOCA	GSSArchitecture	Gleeds Management ServicesHKS
--	Initiate Consulting	Architects
--	Keegans	John Rowan and Partners
--	Pulse Associates	Stace

Workstream 10 - Structural Engineers		
Micro-Enterprise	Small Enterprise	Medium+ Enterprise
Beta Design Consultants	Egniol Consulting	BDP
MPN UK	HBL Associates	Buro Happold
Tisserin Engineers	Malachy Walsh & Partners	ByrneLooby Partners
--	Richard Jackson	Campbell Reith Hill
--	Structa	Clancy Consulting
--	--	Curtins Consulting

Workstream 11 - Civil Engineers		
Micro-Enterprise	Small Enterprise	Medium+ Enterprise
Beta Design Consultants	Egniol Consulting	ByrneLooby Partners
IK Consulting Engineers	Malachy Walsh & Partners	Campbell Reith Hill
--	Richard Jackson	Clancy Consulting
--	Structa	Curtins Consulting
--	--	Perega
--	--	Price & Myers

Workstream 12 - Multi-Discipline Services	
Small Enterprise	Medium+ Enterprise
ADP Architecture	Bailey Partnership (Consultants)
Capital Property & Construction Consultants	Kier Business Services
ECD Architects	McBains
Fraser Brown MacKenna Architects	Pick Everard
The Fulker Consultancy	Ridge and Partners
--	Turner & Townsend

*LISTED ALPHABETICALLY

APPOINTED COMPANIES

ACROSS MIDLANDS

Workstream 1 - Architects		
Micro-Enterprise	Small Enterprise	Medium+ Enterprise
Architecture00	Austin-Smith:Lord	Allies Morrison
Daykin Marshall Studio	Avanti Architects	Baily Garner
KAEBCA	DSDHA	BPTW
Moll Architects & Catja de Haas Architects	GSSArchitecture	Haworth Tompkins
TOCA	Metropolitan Workshop	Jestico + Whiles + Associates
Wren Architecture & Design	Rock Townsend	Levitt Bernstein Associates

Workstream 2 - Building Services Engineers	
Small Enterprise	Medium+ Enterprise
Butler & Young Associates	BDP
Malachy Walsh & Partners	Buro Happold
Method Consulting	Clancy Consulting
PinnacleESP	Couch Perry Wilkes
--	Desco (Design & Consultancy)
--	Stantec UK

Workstream 3 - Building Surveyors		
Micro-Enterprise	Small Enterprise	Medium+ Enterprise
Elvet Construction Surveyors	Arcus Consulting	AHR Building Consultancy
--	Daniel Connal	Baily Garner
--	PinnacleESP	Currie & Brown UK
--	Richard Jackson	Rapleys
--	Storm Tempest	Stace
--	--	Watts Group

Workstream 4 - Clerk of Works		
Micro-Enterprise	Small Enterprise	Medium+ Enterprise
Elvet Construction Surveyors	Hickton Consultants	Baily Garner
--	RG+P	Currie & Brown UK

*LISTED ALPHABETICALLY

APPOINTED COMPANIES

ACROSS MIDLANDS

Workstream 5 - Quantity Surveyors		
Micro-Enterprise	Small Enterprise	Medium+ Enterprise
DMR Surveyors	Daniel Connal	Atkins Réalis
Elvet Construction Surveyors	GSSArchitecture	Stace
JPN Projects	MESH Construction Consultancy	Summers Inman Construction and Property Consultants
Marstan BDB	Pulse Associates	Ward Williams Associates
--	RG+P	WT Partnership

Workstream 6 - Employers Agents		
Micro-Enterprise	Small Enterprise	Medium+ Enterprise
JPN Projects	Arcus Consulting	Baily Garner
Marstan BDB	MESH Construction Consultancy	Currie & Brown UK
TOCA	Pulse Associates	Michael Dyson Associates
--	RG+P	Summers Inman Construction and Property Consultants
--	--	Watts Group
--	--	WT Partnership

Workstream 7 - Planning Consultants		
Micro-Enterprise	Small Enterprise	Medium+ Enterprise
TOCA and NTA Planning	Caulmert	HKS Architects
--	--	Montagu Evans
--	--	Quod
--	--	Stantec UK
--	--	Turley

Workstream 8 - Principal Designers		
Micro-Enterprise	Small Enterprise	Medium+ Enterprise
Pierce Hill Project Services	Glancy Nicholls Architects	AHR Building Consultancy
Safety Advisors	Storm Tempest	Summers Inman Construction and Property Consultants
--	--	Watts Group
--	--	WT Partnership

*LISTED ALPHABETICALLY

APPOINTED COMPANIES

ACROSS MIDLANDS

Workstream 9 - Project Managers		
Micro-Enterprise	Small Enterprise	Medium+ Enterprise
TOCA	Daniel Connal	AHR Building Consultancy
--	GSSArchitecture	Atkins Réalis
--	Pulse Associates	HKS Architects
--	--	Stace
--	--	Ward Williams Associates

Workstream 10 - Structural Engineers		
Micro-Enterprise	Small Enterprise	Medium+ Enterprise
MPN UK	Egniol Consulting	BDP
--	HBL Associates	Buro Happold
--	Malachy Walsh & Partners	ByrneLooby Partners
--	Richard Jackson	Clancy Consulting
--	Structa	Curtins Consulting
--	--	Perega

Workstream 11 - Civil Engineers	
Small Enterprise	Medium+ Enterprise
Egniol Consulting	ByrneLooby Partners
Malachy Walsh & Partners	Clancy Consulting
Richard Jackson	Curtins Consulting
Structa	Perega
--	Price & Myers

Workstream 12 - Multi-Discipline Services	
Small Enterprise	Medium+ Enterprise
ADP Architecture	calfordseaden
Aura Newcastle	Kier Business Services
ECD Architects	McBains
Fraser Brown MacKenna Architects	Pick Everard
--	Ridge and Partners
--	Turner & Townsend

*LISTED ALPHABETICALLY

APPOINTED COMPANIES

CONTINUED

Workstream 9 - Project Managers		
Micro-Enterprise	Small Enterprise	Medium+ Enterprise
Marcel Hendricks & Partners	Academy Consulting Solutions	AHR Building Consultancy
One Consulting Group	Fusion Project Management	Atkins Réalis
TOCA	GSSArchitecture	Gleeds Management ServicesHKS
--	Initiate Consulting	Architects
--	Keegans	John Rowan and Partners
--	Pulse Associates	Stace

Workstream 10 - Structural Engineers		
Micro-Enterprise	Small Enterprise	Medium+ Enterprise
Beta Design Consultants	Egniol Consulting	BDP
MPN UK	HBL Associates	Buro Happold
Tisserin Engineers	Malachy Walsh & Partners	ByrneLooby Partners
--	Richard Jackson	Campbell Reith Hill
--	Structa	Clancy Consulting
--	--	Curtins Consulting

Workstream 11 - Civil Engineers		
Micro-Enterprise	Small Enterprise	Medium+ Enterprise
Beta Design Consultants	Egniol Consulting	ByrneLooby Partners
IK Consulting Engineers	Malachy Walsh & Partners	Campbell Reith Hill
--	Richard Jackson	Clancy Consulting
--	Structa	Curtins Consulting
--	--	Perega
--	--	Price & Myers

Workstream 12 - Multi-Discipline Services	
Small Enterprise	Medium+ Enterprise
ADP Architecture	Bailey Partnership (Consultants)
Capital Property & Construction Consultants	Kier Business Services
ECD Architects	McBains
Fraser Brown MacKenna Architects	Pick Everard
The Fulker Consultancy	Ridge and Partners
--	Turner & Townsend

*LISTED ALPHABETICALLY

EVALUATION

CRITERIA

The process involved a two-stage Restricted Tender that started with a qualification assessment. Shortlisted tenderers were then invited to submit an Invitation To Tender (ITT).

Accreditations and certifications

Each bidder was asked to demonstrate that they were suitably registered and had the necessary skills, expertise, and qualifications needed, alongside the health and safety, environmental, equality and quality ISO certifications (or equivalent) in place to be appointed to this framework. Many of our appointments are BIM Ready or working towards this.

Financial due diligence - applicants were assessed on their turnover and checked via Creditsafe. The results of this check were assessed on a pass/fail basis.

ITT award assessment

Following the qualification stage, the ITT award evaluation process comprised a quality/price criterion, with the sum of both scores establishing the Most Economically Advantageous Tenders (MEAT).

Award weighting criteria

The tenders were evaluated on a **70% quality** and **30% price** split using ‘deviation from mean’ formulas instead of the usual best price rank. This was to make the framework as balanced as possible and even the playing field for micro-SMEs, small enterprises, and medium to large companies.

Quality assessment – 70%

The quality element was assessed based on the applicants’ written responses to a range of technical questions, with bidders evaluated based on scenarios reflecting real life situations that clients would encounter.

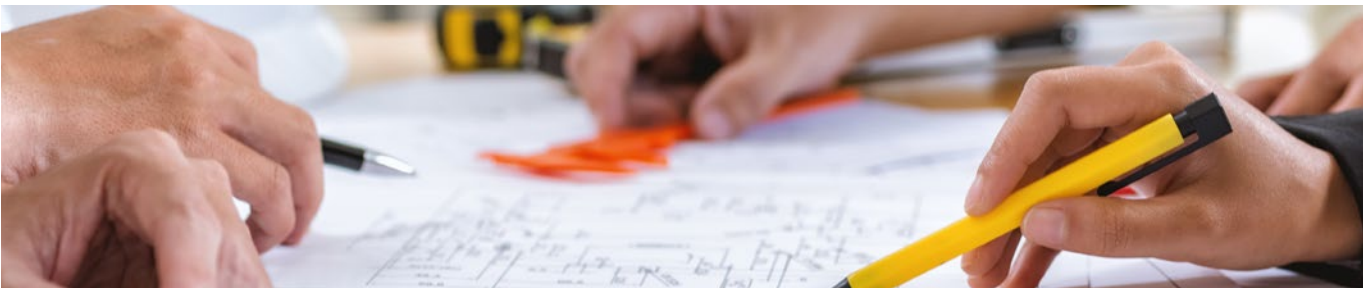
These assessed areas such as customer service, site and procurement risk, and flexibility and sensitivity to differing needs, such as EDI matters.

Price assessment – 30%

The pricing element of the evaluation process accounted for 30% of the overall score. Applicants could apply a regional uplift to their prices and all submissions provided price scores per workstream.

70%
Quality

30%
Price



CALL-OFF AWARD OPTION

THE FRAMEWORK ALLOWS PARTNERS THE OPTION OF:

Direct award without further competition, where all terms and conditions of the call-off project are within the terms and conditions of the framework

OR

Mini-competition, where terms and conditions of the call-off may vary or be modified from the framework or at the choice of the Partner.

When calling off projects, clients can use any one of a range of standard forms of building contract including JCT/SBCC, NEC/NEC4, ACE, PPC, TPC, FAC1, or their own in-house agreement.

ELIGIBILITY

LHC is a not-for-profit organisation, governed by public law and a central purchasing body providing procurement services. Over 200 publicly funded organisations throughout England use LHC frameworks to procure works, goods and services to construct, refurbish and maintain social housing, schools and public buildings:

- Local Authorities and any subsidiaries and joint-venture vehicles of those Local Authorities.
- Registered Social Landlords (RSL), Tenant Management Organisations (TMOs) & Arm's Length Management Organisations (ALMOs)
 - Registered Charities
 - Publicly Funded Schools
 - Universities and Further Education Establishments
 - Colleges
 - Police Forces
 - Fire and Rescue services
 - Health Authorities, Councils, Boards and Trusts

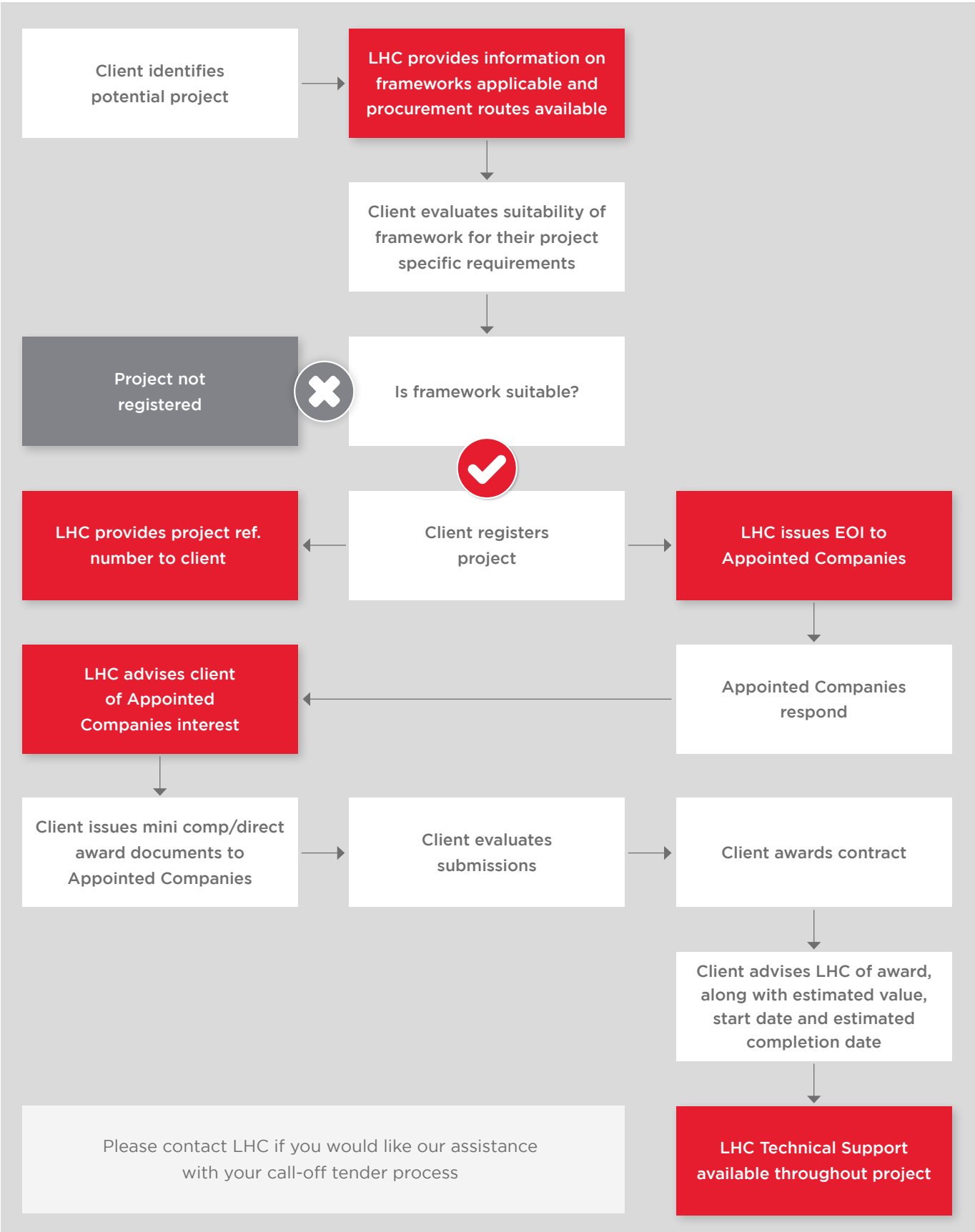
Details of those contracting authorities identified are listed at:
lsc.lhcprocure.org.uk/who-we-work-with/

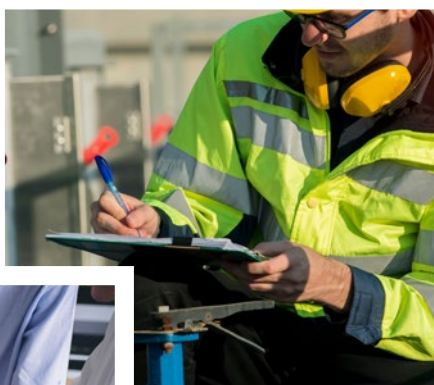
GENERAL TERMS AND CONDITIONS

LHC uses the FAC-1 standard form of contract to manage our frameworks. The LHC pro forma, which should be read in conjunction with the FAC-1 in published form, details the terms and conditions that govern the operation of the framework, including the procedures to call off projects under

the framework. A free copy of the LHC proforma is available upon request. The FAC-1 in standard published form can be purchased at a negotiated rate from ACA, by emailing office@acarchitects.co.uk and quoting discount code reference: LHCFAC2516102017.

THE PROCESS OF USING OUR FRAMEWORK





In association with:

LHC

3rd Floor | 2 Vine Street |
Uxbridge | UB8 1QE

01895 274 800



info@lseprocure.org.uk



@lhccprocurement



linkedin.com/company/lhc

